

Lee
UNIFORMS™

PRODUCT GUIDE 2019



SEPTEMBER 2018



Leeks, lewksbury, boar Yogurt 10
Asparagus, Boar, Yolk 13
Burrata, Ramps, Buttermilk 11
Arugula, Dilled Rhubarb
Sheep Ric

Arctic Char, Cipollini, green
Lamb, Cliff's Turnips, Jack's C
Cheddar
C
mots, D

ART CULINAIRE
13

ART CULINAIRE
13
Poached Fruits and Berries

Must Haves

great for work

Juniors



S/S Stretch Piqué Polo



Original Skinny Leg Pant



Classic 5-Pocket Pant - Plus



Straight Leg Pant - Plus

Young Mens



Sport Polo



Piqué Polo

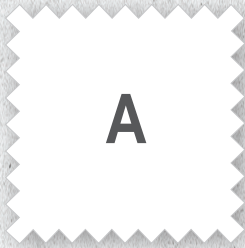


Slim 5-Pocket Skinny Pant - Stretch

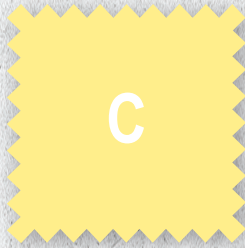


Slim Stretch

Color *great for work*



WHITE



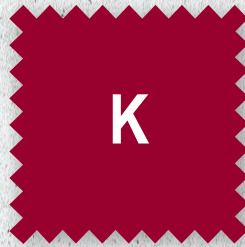
LIGHT YELLOW



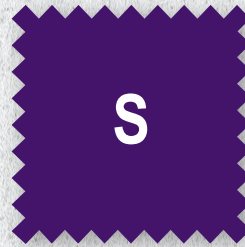
GOLD



RED



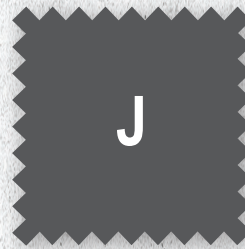
BURGUNDY



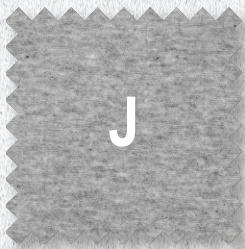
PURPLE



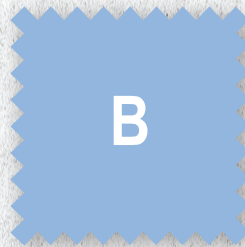
ROYAL



GREY
(BOTTOMS ONLY)



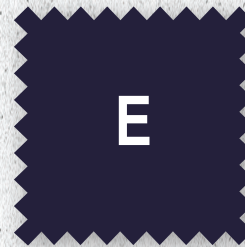
HEATHER GREY
(TOPS ONLY)



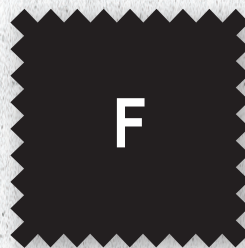
LIGHT BLUE



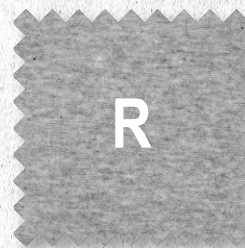
HUNTER GREEN



NAVY



BLACK

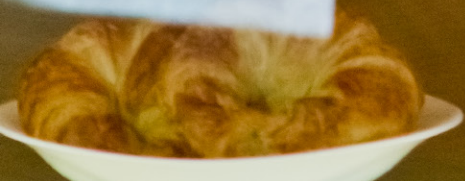


CHARCOAL



KHAKI

Lee
UNIFORMS™



Lee
UNIFORMS™



Packaging *new!*

FRONT/BACK
HANGTAG



FRONT/BACK
BENEFIT TAG



MATCHBOOK



Size Chart

Juniors

Pants size	0	1	3	5	7	9	11	13	15	17*
Inseam	32"	32"	32"	32"	32"	32"	32"	32"	32"	32"

* Not all sizes available in all styles

Plus sizes	16	18	20	22
-------------------	-----------	-----------	-----------	-----------

Tops	S	M	L	XL
Select styles & colors	2X*	3X*		

* Not all sizes available in all styles

Young Mens

Pants waist*	28	29	30	31	32	33	34	36	38	40	42	
Inseam	30"	30"	30"	30"	30"	30"	30"	30"	30"	30"	30"	30"
	32"	32"	32"	32"	32"	32"	32"	32"	32"	32"	32"	32"
					34"		34"	34"				

* Not all sizes available in all styles

Tops	S	M	L	XL
Extended sizes	2XL*	3XL*	4XL*	

* Not all sizes available in all styles

School

Girls bottoms assortment select styles & colors	6 pc by size & color for each
Girls & boys tops assortment select styles & colors	6 pc by size & color for each
Boys bottoms assortment select styles & colors	6 pc by size & color for each

Girls tops size key

XS	S	M	L	XL	XXL
4/5	6/6X	7/8	10/12	14/16	18/20

Boys tops size key

XS	S	M	L	XL	XXL
4/5	6/7	8	10/12	14/16	18/20

Lee
UNIFORMS™



JUNIORS

A9438JL

Short Sleeve Stretch Piqué Polo



- Flat knit collar & cuffs
- Self fabric binding
- 2-button placket
- Side slits
- Cotton/spandex

Colors: *White, *Lt. Blue, Lt. Yellow, *Navy, *Black, Hunter, *Gray, Burgundy, *Red, *Royal, Purple, Gold

Regular sizes: S-XL

***Plus Sizes:** 2x, 3x (A, E, F, J, N, B, P)

MSRP \$18 (regular), **\$24** (plus)

A9541JL

Long Sleeve Stretch Piqué Polo



- Flat knit collar & cuffs
- Self fabric binding
- 2-button placket
- Side slits
- Cotton/spandex

Colors: White, Navy, Black, Gray

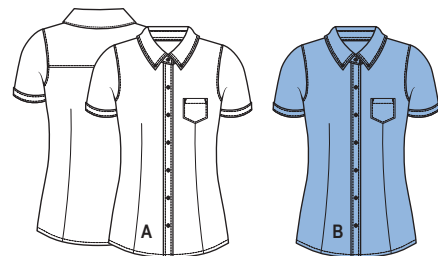
Sizes: S-XL

MSRP \$24 (regular)



E9354JL

Short Sleeve Stretch Oxford Shirt



- 7-button placket
- Button down collar
- Front patch pocket
- Front and back darts
- Slim fit
- Stretch oxford

Colors: *White, Lt. Blue

Sizes: S-XL,

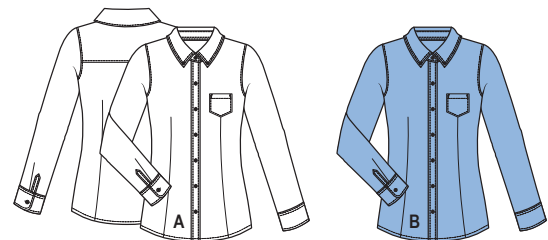
***Plus sizes:** 2x, 3x (white only)

6pc by Size

MSRP \$24 (regular)

E9355JL

Long Sleeve Stretch Oxford Shirt



- 7-button placket
- Button down collar
- Front patch pocket
- Front and back darts
- Slim fit
- Stretch oxford

Colors: *White, Lt. Blue

Sizes: S-XL,

***Plus sizes:** 2x, 3x (white only)

6pc by Size

MSRP \$28 (regular), **\$32** (plus)



JUNIORS

Lee
UNIFORMS™

great for work

JUNIORS



SHORTS

H9216JL Basic Stretch Short



- Hook & bar closure
- J shaped front pockets
- 2 back welt pockets
- 7.9 oz. stretch twill

Colors: Navy, Black, Khaki
8" Inseam
Sizes: 0-15
6pc by Size
MSRP \$28

H9217JL Bermuda Stretch Short



- Hook & bar closure
- J shaped front pockets
- 2 back welt pockets
- 7.9 oz. stretch twill

Colors: Navy, Black, Khaki
12" Inseam
Sizes: 0-15
6pc by Size
MSRP \$28

SKINNY

K9435JL Original Skinny Leg Pant



- Logo shank button closure
- 2 side seam pockets
- 2 back welt pockets
- Skinny leg
- 7.9 oz. stretch twill

Colors: Navy, Black, Khaki, Gray
12½" leg opening
Sizes: 0-17
6pc by Size
MSRP \$38

K9434JL K9434JLP (Plus Size) Classic 5 Pocket Skinny Pant



- Logo shank button closure
- 2 scoop pockets with coin pocket
- 2 back patch pockets with signature embroidery
- Skinny leg
- 7.9 oz. stretch twill

Colors: Navy, Black, Khaki
12½" leg opening
32 Inseam
Sizes: 0-15
6pc by Size/Color
MSRP \$38 (regular) \$44 (plus)



K9505JL 5 Pocket Skinny Ponte Ankle Length Pant



- Logo shank button closure
- Skinny leg
- Cotton blend ponte
- Knit fabric

Colors: Navy, Black, Khaki
12½" leg opening
31" Inseam
Sizes: 0-15
6pc by Size
MSRP \$38

JUNIORS



STRAIGHT

K9432JL, K9432JLP (plus size)
Original Straight Leg Pant



- Logo shank button closure
 - 2 side seam pockets
 - 2 back welt pockets
 - Straight leg
 - 7.9 oz. stretch twill
- Colors:** Navy, Black, Khaki, Gray
15 3/4" Leg opening
32" Inseam
Sizes: 0-15
Plus sizes: 16-22 (E, F, G)
6pc by Size/Color
MSRP \$38 (regular) \$44 (plus)

K9438JL
Curvy Straight Leg Pant



- Shank button closure
 - 2 slash pockets
 - 2 back welt pockets
 - Straight leg
 - 7.9 oz. stretch twill
- Colors:** Navy, Black, Khaki
15 3/4" Leg opening
32" Inseam
Sizes: 0-15
Plus sizes: 16-22 (E, F, G)
6pc by Size
MSRP \$42

great for work

YOUNG MENS



A9440YL Short Sleeve Basic Polo



- Flat knit collar & 1x1rib cuffs
- Self fabric neck binding
- 2-button placket
- Side slits with tail bottom
- Modern fit
- Cotton blend piqué

Colors: *White, *Lt. Blue, *Navy, *Black, Hunter, *Gray, Burgundy, *Gold, *Red, *Royal, Purple, Royal
Sizes: S-XL
6pc by Size
MSRP \$18 (regular) **\$22** (extended size)
 Extended size colors: A, E, F, J, N
 Extended size 2X only: B, H, L

A9491YL Short Sleeve Classic Polo



- Flat knit collar & 1x1rib cuffs
- Self fabric neck binding
- 2-button placket
- Side slits with tail bottom
- Classic fit
- Cotton blend piqué

Colors: White, Lt. Blue, Navy, Black, Hunter, Burgundy
Sizes: S-XL
6pc by Size
MSRP \$18



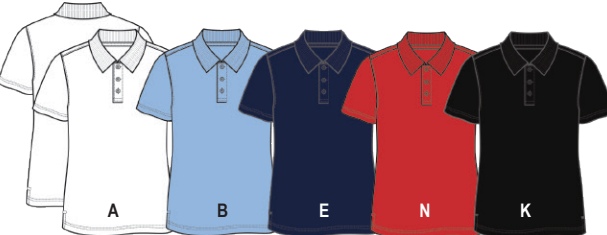
A9441YL Long Sleeve Piqué Polo



- Flat knit collar & 1x1rib cuffs
- Self fabric neck binding
- 2-button placket
- Side slits with tail bottom
- Modern fit
- Cotton blend piqué

Colors: White, Lt. Blue, Navy, Black, Hunter, Gray, Red
Sizes: S-XL
6pc by Size
MSRP \$24

A9536YL Short Sleeve Sport Polo



- Flat knit collar
- Self fabric neck binding
- 2-button placket
- Side slits
- Classic fit
- Polyester moisture wicking piqué

Colors: White, Lt. Blue, Navy, Red, Black
Sizes: S-XL
6pc by Size
MSRP \$20

YOUNG MENS

Lee
UNIFORMS™

great for work

Lee
UNIFORMS™

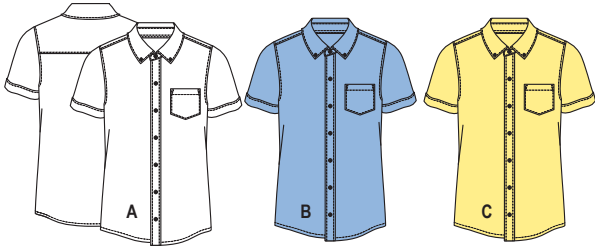
YOUNG MENS

great for work

YOUNG MENS

E9342YL

Short Sleeve Oxford Shirt



- Front patch pocket
- 7-button placket
- Classic fit
- Cotton blend oxford

Colors: * White, Lt. Blue, * Yellow

Sizes: S-XL

6pc by Size

MSRP \$24 (regular), **\$34** (extended size)

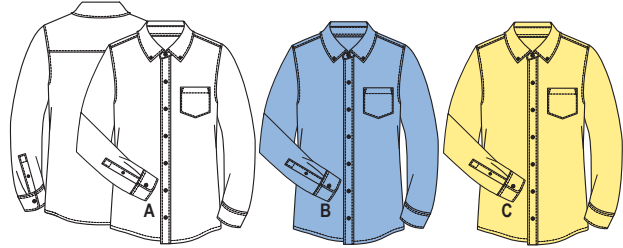
Extended sizes 2XL-4XL: A

Extended sizes 2X: C

6pc by Size

E9341YL

Long Sleeve Oxford Shirt



- Front patch pocket
- Finished placket with button at sleeve cuff
- 7-button placket
- Classic fit
- Cotton blend oxford

Colors: * White, * Lt. Blue, Yellow

Sizes: S-XL

6pc by Size

MSRP \$24 (regular), **\$34** (extended size)

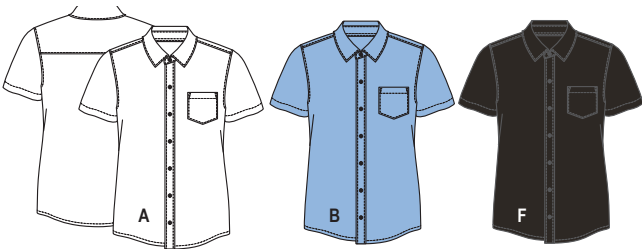
Extended sizes 2XL-4XL: A

Extended sizes 2X: B

6pc by Size

E9338YL

Short Sleeve Poplin Shirt



- Front patch pocket
- 7-button placket
- Classic fit
- Cotton blend poplin

Colors: White, Lt. Blue, Black

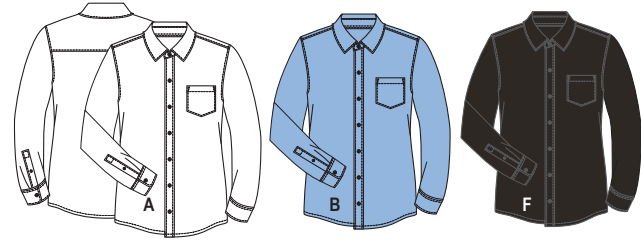
Sizes: S-XL

6pc by Size

MSRP \$22

E9337YL

Long Sleeve Poplin Shirt



- Front patch pocket
- Finished placket with button at sleeve cuff
- 7-button placket
- Classic fit
- Cotton blend poplin

Colors: White, Lt. Blue, Black

Sizes: S-XL

6pc by Size

MSRP \$24

P9133YL

Fleece Hoodie



- Full zip front
- 1X1 rib cuff and hem
- Classic fit
- Cotton blend 260 GSM

Colors: Navy, Black

Sizes: S-XL

6pc by Size

MSRP \$34



YOUNG MENS

H9241YL

Classic Stretch Short



- Logo shank button closure
- 2 slash pockets
- 2 back welt pockets
- 8 oz. cotton stretch blend

Colors: Navy, Black, Khaki
11½" Inseam
Sizes: 28-38 (even waist only)
6pc by Size
MSRP \$28

K9440YL

Slim Trousler Pant



- Hook & bar closure
- 2 side seam pockets
- 2 back welt pockets
- Slim straight leg
- 8 oz. cotton blend twill
- Wrinkle resistant

Colors: Navy, Black, Khaki, Gray
16 ¼" Leg opening
Sizes: 28-42
6pc by Size
MSRP \$36

K9439YL

Classic Fit Pant (formerly College Pant)



- Hook & bar closure
- 2 slash pockets with coin pocket
- 2 back welt pockets
- Straight leg
- 8 oz. cotton blend twill
- Wrinkle resistant

Colors: Navy, Black, Khaki, Gray
17 ½" Leg opening
Sizes: 28-42
6pc by Size
MSRP \$36

great for work





K9519YL

Slim Stretch Pant



- Logo shank button closure
- 2 scoop pockets with coin pocket
- 2 back welt pockets with signature embroidery
- Slim straight leg
- 8 oz. cotton blend twill
- Wrinkle resistant

Colors: Navy, Black, Khaki
15 1/4" Leg opening
Sizes: 28-42
6pc by Size
MSRP \$36

K9441YL

Slim 5-Pocket Pant



- Logo shank button closure
- 2 scoop pockets with coin pocket
- 2 back welt pockets with signature embroidery
- Slim straight leg
- 8 oz. cotton blend twill
- Wrinkle resistant

Colors: Navy, Black, Khaki, Gray
16 1/4" Leg opening
Sizes: 28-42
6pc by Size
MSRP \$36

K9504YL

Skinny Stretch 5-Pocket Pant



- Logo shank button closure
- 2 scoop pockets with coin pocket
- 2 back patch pockets
- Skinny leg
- 8 oz. cotton blend twill

Colors: Black, Khaki
14 1/2" Leg opening
Sizes: 28-38 (even waist only)
6pc by Size
MSRP \$36

Lee
UNIFORMS™

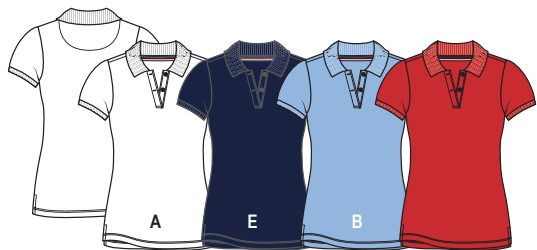
GIRLS



great for school

A9468L

Short Sleeve Stretch Piqué Polo



- Flat knit collar & cuffs
- Inner neck taping
- Half moon inner back yoke
- Side slits
- Easy care
- Stretch baby piqué

Colors: White, Navy, Lt. Blue, Red

Sizes: XS-XXL

6pc by Size

MSRP XS-S \$18, M-L \$18, XL-XXL \$18

X9238L

Pleated Scooter



- Adjustable waist
- Horn buttons
- Side zip closure
- Knit shorts for comfort
- Inner waistband trim
- Soft-hand finish
- 7.4 oz. stretch twill

Colors: Navy, Khaki

Sizes: 4-20

12pc asmt pack

MSRP UA \$26, XA \$26, XD \$26

K9482L

Stretch Twill Straight Leg Pant



- Adjustable waist
- Hidden hook & bar closure
- Horn buttons
- Side seam pockets
- 2 back welt pockets
- Contrast texture fabric waistband
- Soft-hand finish
- 7.4 oz. stretch twill

Colors: Navy, Black, Khaki

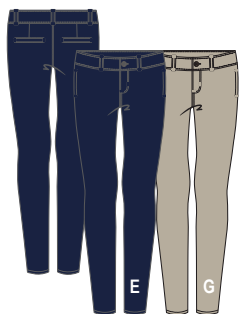
Sizes: 4-20

6pc by size

MSRP 4-6 \$32, 7-12 \$32, 14-20 \$32

K9483L

Stretch Twill Skinny Leg Pant



- Adjustable waist
- Hidden hook & bar closure
- Horn buttons
- Side seam pockets
- 2 back welt pockets
- Contrast texture fabric waistband
- Soft-hand finish
- 7.4 oz. stretch twill

Colors: Navy, Khaki

Sizes: 4-20

6pc by size

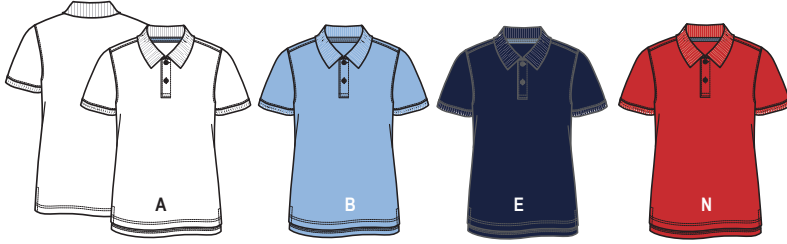
MSRP 4-6 \$32, 7-12 \$32, 14-20 \$32



BOYS

A9467L

Short Sleeve Piqué Polo



- Flat knit collar & cuffs
- Contrast inner neck taping
- Half moon inner back yoke
- 2-button placket
- Side vents with tail bottom
- Cotton blend piqué

Colors: White, Navy, Lt. Blue, Red

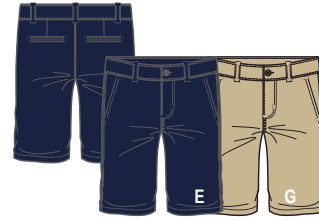
Sizes: XS-XXL

6pc by Size

MSRP XS-S \$18, M-L \$18, XL-XXL \$18

H9232L

Classic Flat Front Short



- Adjustable waist
- Hook & bar closure
- 2 slash pockets with coin pocket
- 2 back welt pockets
- Inner waistband trim
- Soft-hand finish
- 8 oz. cotton blend twill

Colors: Navy, Khaki

Sizes: 4-20

6pc by Size

MSRP XS-S \$24, M-L \$24, XL-XXL \$24



K9480L

Slim Straight Chino Pant



- Adjustable waist
- Hook & bar closure
- Horn button
- 2 slash pockets
- 2 back welt pockets
- Inner waistband trim
- Straight leg
- Soft-hand finish
- 8 oz. cotton blend twill

Colors: Navy, Khaki

Sizes: 4-20

6pc by Size

MSRP 4-7 \$32, 8-14 \$32, 16-20 \$32

H9479L

College Pant Slim Straight Leg



- Adjustable waist
- Hook & bar closure
- Horn button
- 2 slash pockets
- 2 back welt pockets
- Inner waistband trim
- Straight leg
- Soft-hand finish
- 8 oz. cotton blend twill

Colors: Navy, Khaki

Sizes: 4-20

6pc by Size

MSRP 4-7 \$32, 8-14 \$32, 16-20 \$32

BOYS

Lee
UNIFORMS™

great for school

Lee
UNIFORMS™

LEE.COM

