

**FRENCH
TOAST®**

Back-to-School 2019

Best-in-Class Performance



Best-in-Class Performance

SMART IS ALWAYS IN STYLE



p.13 Girls



p.37 Womens



p.41 Boys



p.54 Mens

FIND YOUR FAVORITES

Product Features 4-5

Girls

Polos	13-15
Two-fers	16
Woven Tops	17-19
Sweaters	20
Shorts	21
Pants	22-24
Scooters	26-29
Skirts	30
Jumpers	31-32
Dresses	33
Activewear	34-35
Jackets & Outerwear	35
Womens	36-37

Boys

Polos	39-40
Woven Tops	40-41
Sweaters	42
Shorts	43-44
Pants	45-48
Activewear	49-50
Jackets & Outerwear	51
Mens	52-54
Accessories	55

FRENCHTOASTDIRECT.COM

Easy 24/7 online access • Review Catalog • Create Order • Check Inventory • Track Order Status
For more information about B2B, contact your sales rep or call 1.888.557.2466

**FRENCH
TOAST®**

French Toast is the #1 brand in schoolwear. A school-centric, national brand, French Toast delivers comfort that lasts. We do this with great versatile product, outstanding service and an unmatched connection to America's schools. We partner with families by offering school uniforms, basics and casual styles that every kid needs every day.





GET SMART!

With plenty of gold stars and top reviews, our schoolwear offers Best-in-Class performance in clothing that is comfortable and durable.



Our products last wash after wash.



Extra strength where they need it most.



Super soft fabric they will love all day.



Fabric for easy care.



Keeps moisture out leaving them cool and comfortable.



The best fit and room for them to grow.

NEW!

Best-in-Class Performance

COMFORT STRETCH WAIST



Our Comfort Stretch Waistband is another way the French Toast Brand demonstrates Best-in-Class Performance.

- The most comfortable waistband that will move and stretch with kids.
- The only comfort stretch waistband that is adjustable.
- It stretches, moves and adjusts. Defines Best-in-Class Performance.



HOW DOES SHE MEASURE UP?

To ensure the perfect fit, these size charts provide height, weight, chest and waist measurements for girls. Use the guidelines for the most accurate measurements.

Height

Measure your child without shoes, feet together and back to the wall. Place tape measure from the floor to the top of the head.

Chest

Place tape measure under your child's arm and around the fullest part of the chest. Tape should be comfortably loose.

Waist

Measure your child in underwear. At the natural waistline, place one finger in between the tape and your child's body.



Girls Tops

	SIZE	AGE	HEIGHT	WEIGHT	CHEST	WAIST
XS (4/5)	4	3 - 4yr	39" - 41"	33 - 36	22"	22"
	5	4 - 5yr	42" - 44"	37 - 40	23"	22 1/2"
S (6/6X)	6	5 - 6yr	45" - 46"	41 - 46	24"	23"
	6X	6yr	47" - 48"	47 - 50	25"	23 1/2"
M (7/8)	7	6 - 8 yr	49" - 50"	51 - 55	26"	23 1/2"
	8	7 - 8 yr	51" - 52"	56 - 63	27"	24 1/4"
L (10/12)	10	9 - 10 yr	53" - 55"	64 - 74	28 1/2"	25"
	12	11 - 12 yr	56" - 58"	75 - 84	30"	26"
XL (14/16)	14	12 - 13 yr	59" - 61"	88 - 97	31 1/2"	28"
	16	14 yr & up	62" - 64"	98 & up	33"	30"
XXL (18/20)	18		65" - 66"		35 1/2"	32"
	20		67" - 68"		37 1/2"	34"

Girls Plus Tops

	SIZE	AGE	CHEST	WAIST
M (10/12)	10 1/2	9 - 10 yr	30"	28 1/2"
	12 1/2	11 - 12 yr	30"	30"
L (14/16)	14 1/2	12 - 13 yr	31 1/2"	32"
	16 1/2	14 yr & up	35	34"
XL (18/20)	18 1/2		36 1/2"	35 1/2"
	20 1/2		38"	37"

Womens Tops

SIZE	CHEST	WAIST
XS	34"	27 3/4"
S	36 1/4"	29 1/2"
M	38 3/4"	32 1/4"
L	42"	36"
XL	45"	41"

Bottoms

SIZE	WAIST	HIP
0	25 3/4"	27 3/4"
2	26 3/4"	29 1/2"
4	27 3/4"	32 1/4"
6	28 1/2"	36"
8	29 1/2"	41"
10	47"	43 1/4"
12	49"	45 1/2"
14	34"	42 1/2"

Blazer

SIZE	CHEST	WAIST
0	32"	25 3/4"
2	33"	26 3/4"
4	34"	27 3/4"
6	35 1/4"	28 1/2"
8	36 1/4"	29 1/2"
10	37 1/4"	30 1/2"
12	38 3/4"	32 1/4"
14	40 3/4"	34"

Bottoms

	SIZE	AGE	HEIGHT	WEIGHT	WAIST	HIP	INSEAM
XS (4/5)	4	3 - 4yr	39" - 41"	33 - 36	22"	23"	17"
	5	4 - 5yr	42" - 44"	37 - 40	22 1/2"	24"	19"
S (6/6X)	6	5 - 6yr	45" - 46"	41 - 46	23"	25"	20 1/4"
	6X	6yr	47" - 48"	47 - 50	23 1/2"	25 3/4"	22"
M (7/8)	7	6 - 8 yr	49" - 50"	51 - 55	23 1/2"	27 1/2"	23"
	8	7 - 8 yr	51" - 52"	56 - 63	24 1/4"	28 1/2"	24 1/2"
L (10/12)	10	9 - 10 yr	53" - 55"	64 - 74	25"	30"	26"
	12	11 - 12 yr	56" - 58"	75 - 84	26"	32"	27"
XL (14/16)	14	12 - 13 yr	59" - 61"	88 - 97	28"	34"	29"
	16	14 yr & up	62" - 64"	98 & up	30"	36"	29 1/2"
XXL (18/20)	18		65" - 66"		32"	38"	29 1/2"
	20		67" - 68"		34"	40"	29 1/2"

Dresses

	SIZE	AGE	HEIGHT	WEIGHT	WAIST	HIP	INSEAM
XS (4/5)	4	3 - 4yr	39" - 41"	33 - 36	22"	22"	23"
	5	4 - 5yr	42" - 44"	37 - 40	23"	22 1/2"	24"
S (6/6X)	6	5 - 6yr	45" - 46"	41 - 46	24"	23"	25"
	6X	6yr	47" - 48"	47 - 50	25"	23 1/2"	25 3/4"
M (7/8)	7	6 - 8 yr	49" - 50"	51 - 55	26"	23 1/2"	27 1/2"
	8	7 - 8 yr	51" - 52"	56 - 63	27"	24 1/4"	28 1/2"
L (10/12)	10	9 - 10 yr	53" - 55"	64 - 74	28 1/2"	25"	30"
	12	11 - 12 yr	56" - 58"	75 - 84	30"	26"	32"
XL (14/16)	14	12 - 13 yr	59" - 61"	88 - 97	31 1/2"	28"	34"
	16	14 yr & up	62" - 64"	98 & up	33"	30"	36"
XXL (18/20)	18		65" - 66"		35 1/2"	32"	38"
	20		67" - 68"		37 1/2"	34"	40"

Bottoms

	SIZE	AGE	HEIGHT	WAIST	HIP	INSEAM
M (10/12P)	10 1/2	9 - 10 yr	53" - 55"	28 1/2"	33"	25 1/2"
	12 1/2	11 - 12 yr	56" - 58"	30 1/2"	34"	27"
L (14/16P)	14 1/2	14 yr & up	59" - 60"	32"	36"	28 1/2"
	16 1/2		61" - 63"	34"	37 1/2"	29"
XL (18/20P)	18 1/2		64" - 65"	35 1/2"	39"	29"
	20 1/2		65" - 66"	37"	40 1/2"	29"
	42		64" - 67"	38"	41 1/2"	29"
	44			40"	43 1/2"	29"
	46	42"		45 1/2"	29"	

Girls Slim Bottoms

SIZE	AGE	HEIGHT	WAIST	HIP	INSEAM
4S	3 - 4 yr	38" - 40"	19 1/2"	22 1/4"	17"
5S	4 - 5 yr	41" - 43"	20"	22 3/4"	18 3/4"
6S	5 - 6 yr	44" - 46"	20 1/2"	23 1/4"	20 1/4"
6XS	6 yr	46" - 47"	21"	23 3/4"	22"
7S	6 - 7 yr	48" - 49"	21 1/4"	24"	23"
8S	7 - 8 yr	50" - 52"	22"	25"	25"
10S	9 - 10 yr	53" - 55"	23"	26 1/2"	26"
12S	11 - 12 yr	56" - 58"	24"	28"	27"
14S	12 - 13 yr	59" - 60"	25"	29 1/2"	29"



Boys Tops

	SIZE	AGE	HEIGHT	WEIGHT	CHEST	WAIST
XS (4/5)	4	3 - 4yr	39" - 41"	33 - 37	22"	22"
	5	4 - 5yr	42" - 44"	38 - 42	23"	22 1/2"
S (6/7)	6	5 - 6yr	45" - 46 1/2"	43 - 48	24"	23"
	7	6 - 7 yr	47" - 49 1/2"	49 - 57	25 1/2"	23 1/2"
M (8)	8	7 - 8 yr	50" - 52"	50 - 67	26 1/2"	24 1/2"
L (10/12)	10	9 - 10 yr	53" - 55 1/2"	68 - 77	27 1/2"	25 1/2"
	12	11 - 12 yr	53" - 58 1/2"	78 - 87	28 1/2"	26 1/2"
XL (14/16)	14	12 - 13 yr	59" - 61 1/2"	88 - 97	30 1/2"	28"
	16	14 yr & up	62" - 64"	98 & up	32"	29 1/2"
XXL (18/20)	18		65" - 66 1/2"		33 1/2"	31"
	20		67" - 69"		35"	32 1/2"

Bottoms

	SIZE	AGE	HEIGHT	WEIGHT	WAIST	HIP	INSEAM
XS (4/5)	4	3 - 4yr	39" - 41"	33 - 37	22"	23"	17"
	5	4 - 5yr	42" - 44"	38 - 42	22 1/2"	24"	19"
S (6/7)	6	5 - 6yr	45" - 46 1/2"	43 - 48	23"	25"	20"
	7	6 - 7 yr	47" - 49 1/2"	49 - 57	23 1/2"	26 1/2"	23 1/4"
M (8)	8	7 - 8 yr	50" - 52"	50 - 67	24 1/2"	27 3/4"	24 1/4"
L (10/12)	10	9 - 10 yr	53" - 55 1/2"	68 - 77	25 1/2"	29"	25 1/2"
	12	11 - 12 yr	53" - 58 1/2"	78 - 87	26 1/2"	30 1/2"	28"
XL (14/16)	14	12 - 13 yr	59" - 61 1/2"	88 - 97	28"	32"	29 3/4"
	16	14 yr & up	62" - 64"	98 & up	29 1/2"	33 1/2"	31"
XXL (18/20)	18		65" - 66 1/2"		31"	35"	31 1/4"
	20		67" - 69"		32 1/2"	36 1/2"	31 1/4"

Boys Husky

Tops

	SIZE	AGE	HEIGHT	CHEST	WAIST
M (10/12H)	10H	9 - 10 yr	52" - 55"	29 1/2"	29"
	12H	11 - 12 yr	56" - 58"	30 1/2"	30 1/2"
XL (14/16)	14H	12 - 13 yr	59" - 61"	32 1/2"	32"
	16H	14 yr & up	62" - 64"	34"	33 1/2"
XL (18/20)	18H		64" - 65 1/2"	35 1/2"	35"
	20H		66" - 68"	37"	36 1/2"

Bottoms

	SIZE	AGE	HEIGHT	CHEST	WAIST	HIP	INSEAM
M (10/12H)	10H	9 - 10 yr	52" - 55"	29 1/2"	29"	31 1/2"	25 1/4"
	12H	11 - 12 yr	56" - 58"	30 1/2"	30 1/2"	33"	27 1/2"
L (14/16)	14H	12 - 13 yr	59" - 61"	32 1/2"	32"	34 1/2"	28 1/2"
	16H	14 yr & up	62" - 64"	34"	33 1/2"	36"	29 3/4"
XL (18/20)	18H		64" - 65 1/2"	35 1/2"	35"	37 1/2"	30 3/4"
	20H		66" - 68"	37"	36 1/2"	39"	31 1/2"

Boys Toddler

Tops

SIZE	AGE	HEIGHT	WEIGHT	CHEST	WAIST
2T	PRE-K	34" - 35"	25 - 28	20 1/2"	21"
3T		36" - 38"	29 - 32	21"	21 1/2"
4T		39" - 41"	33 - 36	22"	22"

Bottoms

SIZE	AGE	HEIGHT	WEIGHT	WAIST	HIP	INSEAM
2T	PRE-K	34" - 35"	25 - 28	21"	21"	14"
3T		36" - 38"	29 - 32	21 1/2"	22"	16"
4T		39" - 41"	33 - 36	22"	23"	17"

Mens

Tops

SIZE	WAIST	WAIST
S	34" - 36"	28 1/2" - 31"
M	38" - 40"	32 - 35"
L	42" - 44"	36" - 39"
XL	46" - 48"	40" - 43"
2XL	50" - 52"	44" - 47"

Woven Bottoms

SIZE	WAIST	HIP	INSEAM
28	28"	33 1/2"	30, 32, 34
30	30"	35 1/2"	30, 32, 34
32	32"	37 1/2"	30, 32, 34
34	34"	39 1/2"	30, 32, 34"
36	36"	41 1/2"	30, 32, 34
38	38"	43"	30, 32, 34

Knit Bottoms

SIZE	WAIST	HIP	INSEAM
S	28 1/2" - 31"	33 1/2" - 36"	30
M	32" - 35"	37" - 40"	30
L	36" - 39"	41" - 43"	30
XL	40" - 43"	44" - 46"	30
2XL	44" - 47"	47" - 49"	30

Blazer

SIZE	CHEST	WAIST
36	36"	30 1/2"
38	38"	32 1/2"
40	40"	34 1/2"
42	42"	36 1/2"

HOW DOES HE MEASURE UP?

To ensure the perfect fit, these size charts provide height, weight, chest and waist measurements for boys. Use the guidelines for the most accurate measurements.



Height

Measure your child without shoes, feet together and back to the wall. Place tape measure from the floor to the top of the head.

Chest

Place tape measure under your child's arm and around the fullest part of the chest. Tape should be comfortably loose.

Waist

Measure your child in underwear. At the natural waistline, place one finger in between the tape and your child's body.

ASSORTMENT

GIRLS

PRE-PACK	SIZE	ASSORTMENT
MA	2T-4T	4-10-10
UA	4-6X	4-6-8-6
XA	7-14	4-6-6-4-4
XD	16-20	10-8-6
UU	XS-S	10-14
UB	M-XL	10-8-6
XXL	XXL	12
SLIM / PLUS		
UV	4S-6XS	4-6-8-6
GA	7S-14S	4-6-6-4-4
XG	M(10/12P)-XXL(18/20P)	6-8-10
XH	10.5-20.5	2-2-4-6-6-4
XJ (TOP)	42-46	5-4-3
GK (BOTTOM)	38P-42P	4-4-4

WOMEN

	SIZE	BY SIZE
KNIT TOP	XS, S, M, L, XL	6
BLAZER	2, 4, 6, 8, 10, 12, 14	6
BOTTOM	2, 4, 6, 8, 10, 12, 14	6

BOYS

PRE-PACK	SIZE	ASSORTMENT
BA	2T-4T	4-10-10
CA	4-7	4-6-8-6
HB	8-14	6-6-6-6
HJ	16-20	10-8-6
CC	XS-S	8-16
CB	M-XL	6-10-8
XXL	XXL	12
SLIM / HUSKY		
CB	4S-7S	4-6-8-6
HC	8S-14S	6-6-6-6
JB	M(10/12H)-XL(18/20H)	6-8-10
HK	10H-20H	2-2-4-6-6-4
JN (TOP)	LH-2XLH	4-4-4
JK (BOTTOM)	36H-40H	4-4-4

MEN

	SIZE	BY SIZE
TOP	S, M, L, XL, 2XL	6
BLAZER	36, 38, 40, 42	6
WVN PANT	Waist: 28, 30, 32, 36, 38 Inseam: 30, 32, 34	6
WVN SHORT	W28, W30, W32, W34, W36, W38	6
KNIT SHORT	S, M, L, XL, 2XL	6

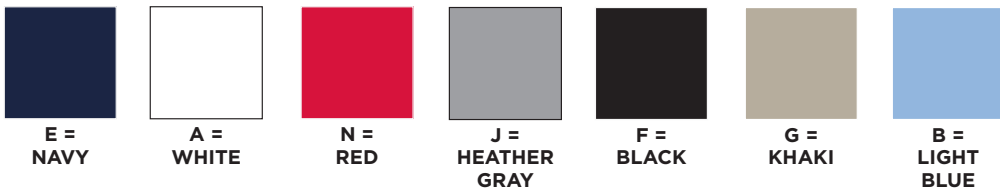




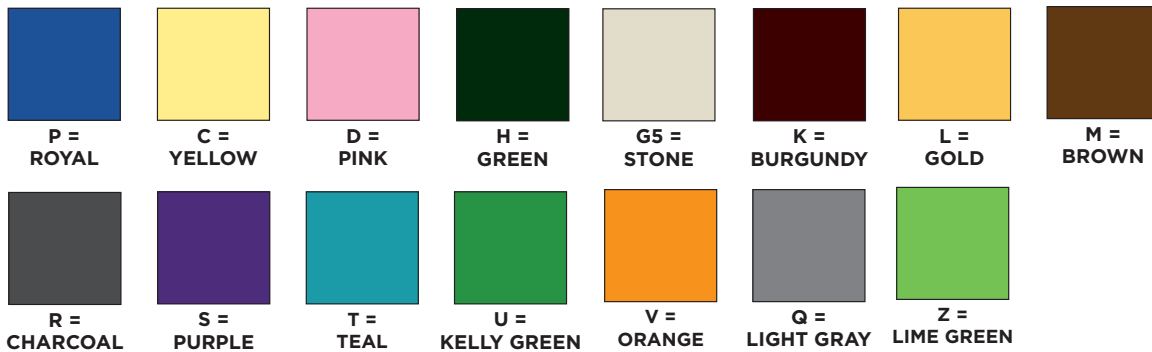
PASS WITH FLYING COLORS

Our cool school color palette from classic core colors to back-to-school brights and glad about plaid.

Classic core school colors



Back-to-school brights



Glad for plaids



FRENCH
TOAST.

UNIFORM 2019



SA9423 S/S Picot Collar Interlock Polo

Cotton Blend Interlock

SA9423	A	B	C	D	E	F	H	J	K	L	N	P	S	V	MSRP
MA (2T-4T)	S	S	S	•	S		•		•	•	S				\$16.00
UU (XS-S)	S	S	S	•	S	S	S	•	S	•	S	•	•	•	\$18.00
UB (M-XL)	S	S	S	•	S	S	S	•	S	•	S	•	•	•	\$18.00
XXL	S	S	S	S	S	S	S	S	S	S	S	S	S	S	\$18.00
XG (PLUS)	S	S	S		S	•	•	•	•	•	•	•	•	•	\$20.00



SA9403 S/S Stretch Piqué Polo

Cotton/Elastane Blend Piqué

SA9403	A	B	C	E	F	H	K	L	N	MSRP
UU (XS-S)	S	S	•	S	•	•	•	•	S	\$18.00
UB (M-XL)	S	S	•	S	•	•	•	•	S	\$18.00
XXL	S	S	S	S						\$18.00
XG (PLUS)	•	•		•	•	•	•	•	•	\$20.00

available in
Womens
p.37



SA9359 S/S Ruffle Polo

Cotton/Elastane Blend Piqué

SA9359	A	B	E	N	MSRP
MA (2T-4T)	•	•	•	•	\$16.00
UU (XS-S)	•	•	•	•	\$18.00
UB (M-XL)	•	•	•	•	\$18.00



RUFFLE DETAIL

SA9519 S/S Peter Pan Collar Polo

Cotton Blend Interlock

SA9519	A	B	E	N	MSRP
MA (2T-4T)	•	•	•	•	\$16.00
UU (XS-S)	•	•	•	•	\$18.00
UB (M-XL)	•	•	•	•	\$18.00



A WHITE

B LT. BLUE

E NAVY

N RED

SA9424 L/S Picot Collar Interlock Polo

Cotton Blend Interlock

SA9424	A	B	C	D	E	F	H	K	L	N	MSRP
MA (2T-4T)	S	S	•	•	S					S	\$18.00
UU (XS-S)	S	S	S	•	S	•	•	S	•	S	\$20.00
UB (M-XL)	S	S	S	•	S	•	•	S	•	S	\$20.00
XXL	S	S	S		S			S		S	\$20.00
XG (PLUS)	S	•	•	•	•	•	•	•	•	•	\$22.00



A WHITE

B LT. BLUE

C YELLOW

D PINK

E NAVY

F BLACK

H HUNTER

K BURGUNDY

L GOLD

N RED

SA9430 L/S Stretch Piqué Polo

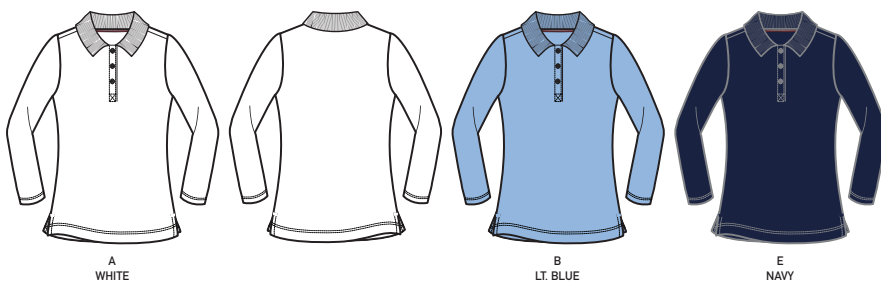
Cotton/Elastane Blend Piqué

SA9430	A	B	E	MSRP
UU (XS-S)	•	•	•	\$20.00
UB (M-XL)	•	•	•	\$20.00
XG (PLUS)	•	•	•	\$22.00

available in Womens p.37



STRETCH



A WHITE

B LT. BLUE

E NAVY

SA9432 S/S Puff Sleeve Polo with Rhinestone Buttons

Cotton Blend Jersey

SA9432	A	B	E	K	N	MSRP
MA (2T-4T)	*	*	*	*		\$18.00
UU (XS-S)	*	*	*	*	*	\$20.00
UB (M-XL)	*	*	*	*	*	\$20.00
XG (PLUS)	*					\$22.00



SLEEVE BUTTON DETAIL

SA9500 S/S Lace Yolk Polo

Cotton Blend Jersey/
Cotton Blend Lace

SA9500	A	E	MSRP
UU (XS-S)	*	*	\$20.00
UB (M-XL)	*	*	\$20.00



SA9556 S/S Bow Pocket Polo

Cotton Blend Jersey

SA9556	A	B	E	N	MSRP
MA (2T-4T)	*	*	*	*	\$16.00
UU (XS-S)	*	*	*	*	\$18.00
UB (7-16)	*	*	*	*	\$18.00



SA9564 S/S Sport Polo

Poly Interlock with Wicking

STRETCH



SA9564	A	E	N	MSRP
UU (XS-S)	*	*	*	\$20.00
UB (7-16)	*	*	*	\$20.00
XXL	*	*	*	\$20.00



GIRLS TWO-FERS

SA9409 2-Fer Cardigan

Cotton Blend Jersey/
Cotton Blend Poplin

SA9409	E	MSRP
MA (2T-4T)	•	\$20.00
UU (XS-S)	•	\$22.00
UB (M-XL)	•	\$22.00
XG (PLUS)	•	\$24.00

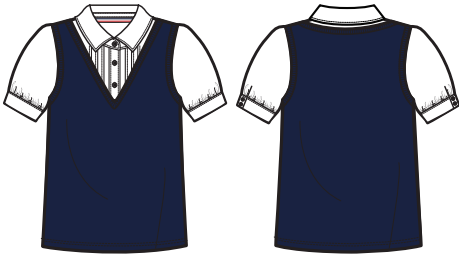


E
NAVY

SA9540 2-Fer Vest

Cotton Blend Jersey/
Cotton Blend Poplin

SA9540	E	MSRP
UU (XS-S)	•	\$22.00
UB (M-XL)	•	\$22.00



E
NAVY

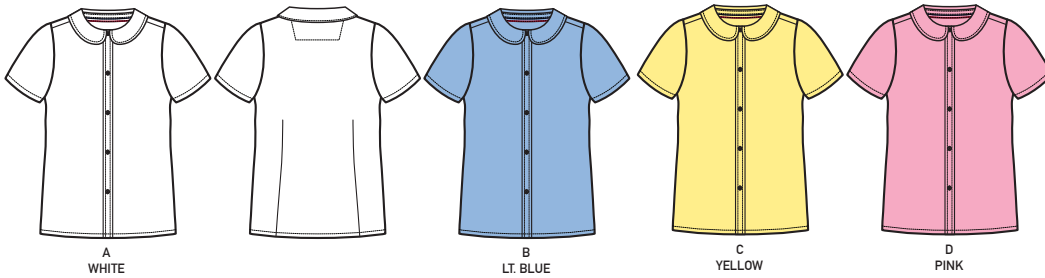


SE9383 S/S Modern Peter Pan Collar Blouse

Cotton Blend Poplin



SE9383	A	B	C	D	MSRP
MA (2T-4T)	S	S	S	*	\$14.00
UA (4-6X)	S	S	S	S	\$16.00
XA (7-14)	S	S	S	S	\$16.00
XD (16-20)	S	S	S	S	\$16.00
XH (PLUS)	S	S	*	*	\$20.00
XJ (42-46)	S	*	*	*	\$20.00



SE9384 L/S Modern Peter Pan Collar Blouse

Cotton Blend Poplin



SE9384	A	B	C	MSRP
MA (2T-4T)	S	S	S	\$16.00
UA (4-6X)	S	S	S	\$18.00
XA (7-14)	S	S	S	\$18.00
XD (16-20)	S	S	S	\$18.00
XH (PLUS)	S	*	*	\$22.00
XJ (42-46)	S	*	*	\$22.00

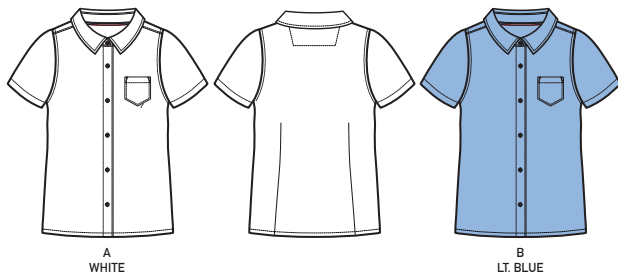


SE9374 S/S Pocket Shirt

Cotton Blend Poplin



SE9374	A	B	MSRP
UA (4-6X)	S		\$16.00
XA (7-14)	S	S	\$16.00
XD (16-20)	S	S	\$16.00
XH (PLUS)	S		\$20.00
XJ (42-46)	*		\$20.00

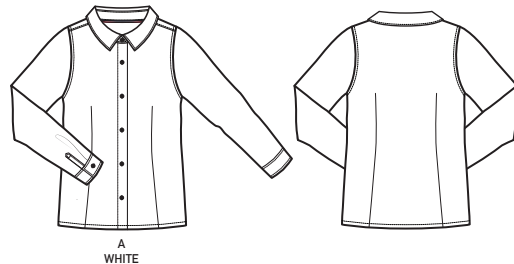


SE9382 L/S Basic Shirt

Cotton Blend Poplin



SE9382	A	MSRP
UA (4-6X)	S	\$18.00
XA (7-14)	S	\$18.00
XD (16-20)	S	\$18.00





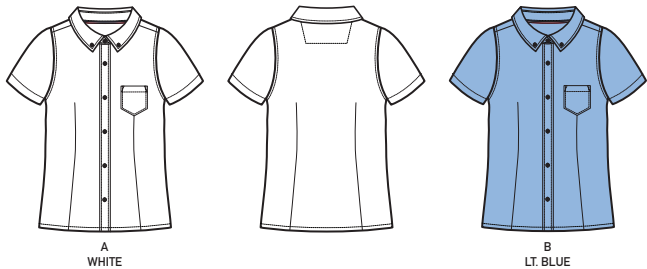
NEW ITEM

SE9284 S/S Oxford Shirt
Cotton Blend Oxford



SE9284	A	B	MSRP
UA (4-6X)	S	•	\$20.00
XA (7-14)	S	•	\$20.00
XD (16-20)	S	•	\$20.00
XH (PLUS)	•	•	\$24.00
XJ (42-46)	•		\$24.00

available in Womens p.37

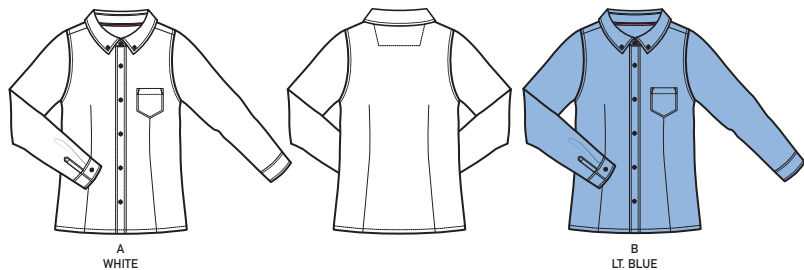


SE9287 L/S Oxford Shirt
Cotton Blend Oxford



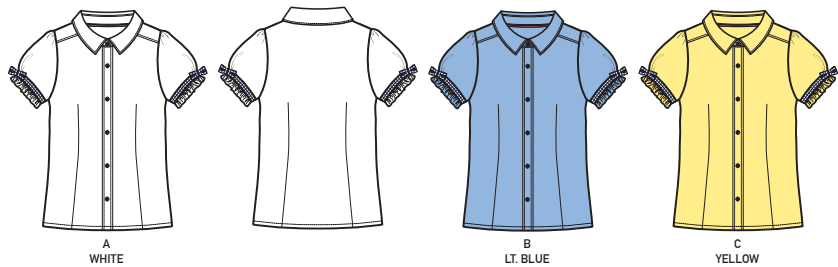
SE9287	A	B	MSRP
UA (4-6X)	S	•	\$22.00
XA (7-14)	S	•	\$22.00
XD (16-20)	S	•	\$22.00
XH (PLUS)	•	•	\$26.00

available in Womens p.38



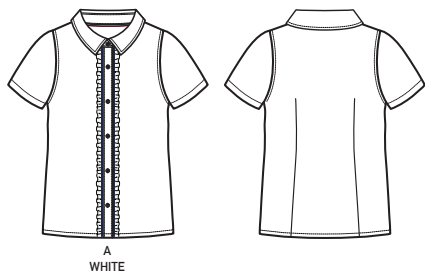
SE9279 S/S Ribbon Bow Blouse
Cotton Blend Poplin

SE9279	A	B	C	MSRP
MA (2T-4T)	•	•	•	\$18.00
UA (4-6X)	•	•	•	\$20.00
XA (7-14)	•	•	•	\$20.00
XD (16-20)	•	•	•	\$20.00



SE9376 S/S Ruffle Front Blouse
Cotton Blend Poplin

SE9376	A	MSRP
UA (4-6X)	•	\$20.00
XA (7-14)	•	\$20.00
XD (16-20)	•	\$20.00



GIRLS WOVEN TOPS

SE9394 S/S Pintuck Blouse

Cotton Blend Poplin

SE9394	A	MSRP
UA (4-6X)	•	\$20.00
XA (7-14)	•	\$20.00



A
WHITE

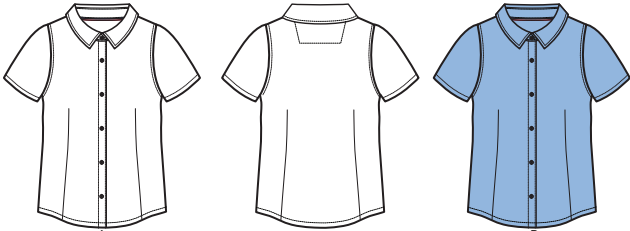
SE9393 S/S Stretch Blouse

Cotton Blend Poplin

STRETCH

SE9393	A	B	MSRP
UA (4-6X)	•	•	\$18.00
XA (7-14)	•	•	\$18.00
XD (16-20)	•	•	\$18.00

available in
Womens
p.37



A
WHITE

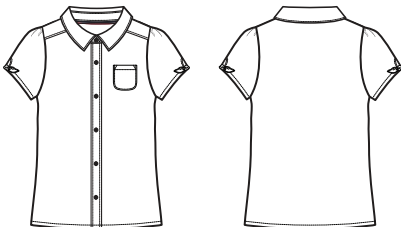
B
LT. BLUE

SE9398 S/S Bow Shirt

Cotton Blend Poplin

SE9398	A	MSRP
UA (4-6X)	•	\$20.00
XA (7-14)	•	\$20.00
XD (16-20)	•	\$20.00

**NEW
ITEM**



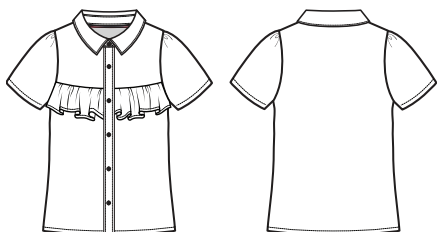
A
WHITE

SE9399 S/S Ruffle Front Shirt

Cotton Blend Poplin

SE9399	A	MSRP
UA (4-6X)	•	\$20.00
XA (7-14)	•	\$20.00
XD (16-20)	•	\$20.00

**NEW
ITEM**



A
WHITE



SC9004 Anti-Pill Crewneck Cardigan

Acrylic

SC9004	E	F	H	K	N	MSRP
MA (2T-4T)	•					\$30.00
UU (XS-S)	S	•	•	S	•	\$32.00
UB (M-XL)	S	•	•	S	•	\$32.00
XXL	S			S		\$32.00
XG (PLUS)	•					\$34.00



E NAVY

F BLACK

H HUNTER GREEN

K BURGUNDY

N RED

SC9232 Bow Pocket Cardigan

Cotton/Acrylic Blend

SC9232	E	MSRP
MA (2T-4T)	•	\$30.00
UU (XS-S)	•	\$32.00
UB (M-XL)	•	\$32.00



E NAVY

SC9234 Ruffle Front Cardigan

Cotton/Acrylic Blend

SC9234	E	MSRP
UU (XS-S)	•	\$32.00
UB (M-XL)	•	\$32.00



E NAVY

SC9087 Zip-Front Pom Pom Sweater

Acrylic

SC9087	E	F	MSRP
UU (XS-S)	S	•	\$32.00
UB (M-XL)	S	•	\$32.00
XXL	S		\$32.00



E NAVY

F BLACK

GIRLS SHORTS

SH9061 Bermuda Short

Cotton Blend Twill, 7 oz.



STRETCH



SH9061	E	G	F	J	MSRP
UA (4-6X)	S	S	•	•	\$22.00
XA (7-14)	S	S	•	•	\$22.00
XD (16-20)	S	S	•	•	\$22.00
XH (PLUS)	S	S	•	•	\$24.00

available in
Womens
p.38



E
NAVY



G
KHAKE



F
BLACK



J
GRAY

SH9112 Pull-On Short

Cotton Blend Twill, 6 oz.



SH9112	E	G	MSRP
MA (2T-4T)	S	S	\$18.00
UA (4-6X)	•	•	\$20.00
XA (7-14)	•	•	\$20.00
XD (16-20)	•	•	\$20.00
XH (PLUS)	•	•	\$22.00



E
NAVY



G
KHAKE



SH9248 Pull-On Tie Front Short

Cotton Blend Twill, 7.2 oz

STRETCH

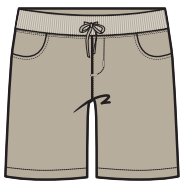
SH9248	E	G	MSRP
MA (2T-4T)	•	•	\$18.00
UA (4-6X)	•	•	\$20.00
XA (7-14)	•	•	\$20.00
XD (16-20)	•	•	\$20.00
XH (PLUS)	•	•	\$22.00



E
NAVY



G
KHAKE



SH9250 Belted Short

Cotton Blend Twill, 7.2 oz

STRETCH



SH9250	E	G	MSRP
UA (4-6X)	•	•	\$24.00
XA (7-14)	•	•	\$24.00



E
NAVY



G
KHAKE



SH9260 Elastic BK Bow Front Short

Cotton Blend Twill, 7 oz

STRETCH

SH9260	E	G	F	J	MSRP
UA (4-6X)	S	S	•	•	\$24.00
XA (7-14)	S	S	•	•	\$24.00
XD (16-20)	S	S	•	•	\$24.00



E
NAVY



G
KHAKE



SK9295 Bootcut Pant
Cotton Blend Twill, 7 oz.

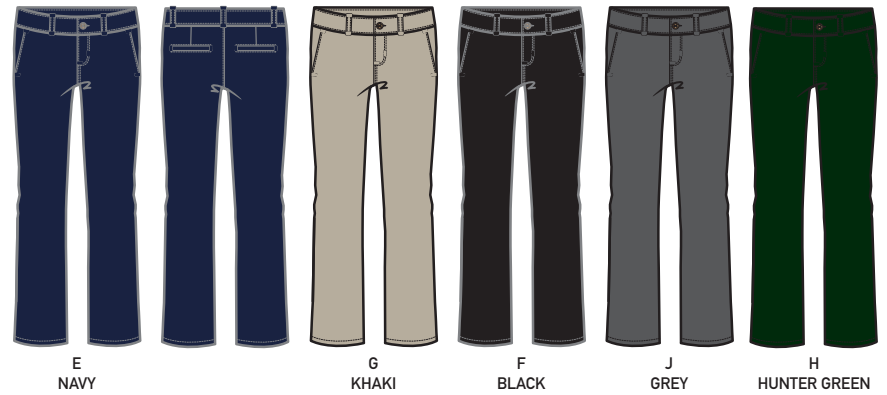
SK9295	E	G	F	J	MSRP
UA (4-6X)	S	S	S	S	\$28.00
UV (4-6X SLIM)	S	S	•		\$28.00
XA (7-14)	S	S	S	S	\$28.00
GA (7-14 SLIM)	S	S	•		\$28.00
XD (16-20)	S	S	S	S	\$28.00
XH (PLUS)	S	S	S	•	\$32.00



SK9490 Straight Leg Pant
Cotton Blend Twill, 7 oz.

SK9490	E	G	F	J	H	MSRP
UA (4-6X)	S	S	S	S	•	\$28.00
UV (4-6X SLIM)	S	S				\$28.00
XA (7-14)	S	S	S	S	•	\$28.00
GA (7-14 SLIM)	S	S				\$28.00
XD (16-20)	S	S	S	S	•	\$28.00
XH (PLUS)	S	S	•	•	•	\$32.00

available in Womens p.38



SK9405 Skinny Pant
Cotton Blend Twill, 7 oz.

SK9405	E	G	F	J	MSRP
UA (4-6X)	S	S	S	S	\$28.00
XA (7-14)	S	S	S	S	\$28.00
XD (16-20)	S	S	S	S	\$28.00
XH (PLUS)	•	•	•	•	\$32.00

available in Womens p.38



SK9317 Bootcut Pull-On Pant

Cotton Blend Twill, 7 oz.



SK9317	E	G	F	J	MSRP
MA (2T-4T)	S	S	S	•	\$22.00
UA (4-6X)	S	S		•	\$24.00
XA (7-14)	S	S		•	\$24.00
XD (16-20)	S	S			\$24.00
XH (PLUS)	•	•			\$28.00



E
NAVY

G
KHAKI

F
BLACK

J
GREY

SK9502 Skinny 5-Pocket Knit Pant

Cotton Blend Ponte

STRETCH

ADJUSTABLE WAIST

SK9502	E	G	F	MSRP
UA (4-6X)	S	S	•	\$28.00
XA (7-14)	S	S	•	\$28.00
XD (16-20)	S	S	•	\$28.00
XH (PLUS)	•	•		\$32.00

available in
Womens

p.38



E
NAVY

G
KHAKI

F
BLACK

SK9514 Contrast Elastic Waist Pull-On Pant

Cotton/Poly/Blend Ponte/Elastane Twill, 7.2 oz.

STRETCH

SK9514	E	G	MSRP
MA (2T-4T)	•	•	\$18.00
UA (4-6X)	•	•	\$20.00
XA (7-14)	•	•	\$20.00
XD (16-20)	•	•	\$22.00
XH (PLUS)	•	•	\$24.00



E
NAVY

G
KHAKI



WAIST DETAIL



SK9460 Straight Leg Belted Pant

Cotton Blend Twill, 7 oz.

SK9460	E	G	MSRP
UA (4-6X)	•	•	\$32.00
XA (7-14)	•	•	\$32.00
XD (16-20)	•	•	\$32.00



E NAVY

G KHAKI

SK9513 Skinny Pull-On Pant

Cotton Blend Twill, 7.2 oz.

SK9513	E	G	MSRP
UA (4-6X)	•	•	\$18.00
XA (7-14)	•	•	\$18.00



E NAVY

G KHAKI

SK9540 5-Pocket Pant

Cotton Blend Twill, 7.2 oz.

SK9540	E	G	MSRP
UA (4-6X)	•	•	\$28.00
XA (7-14)	•	•	\$32.00
XD (16-20)	•	•	\$32.00
XH (PLUS)	•	•	\$36.00



E NAVY

G KHAKI

SK9548 Pull-On Pant

Cotton Blend Twill, 7.2 oz.

SK9548	E	G	MSRP
MA (2T-4T)	•	•	\$22.00
UA (4-6X)	•	•	\$24.00
XA (7-14)	•	•	\$24.00
XD (16-20)	•	•	\$24.00



E NAVY

G KHAKI

GIRLS PANTS



NEW
ITEM

SX9103 2-Tab Scooter

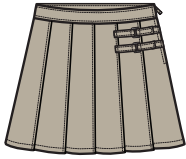
Poly Twill



SX9103	E	G	F	H	J	K	MSRP
MA (2T-4T)	S	S					\$22.00
UA (4-6X)	S	S	S	•	S	•	\$24.00
XA (7-14)	S	S	S	•	S	•	\$24.00
XD (16-20)	S	S	S	•	S	•	\$24.00
XH (PLUS)	S	S	S				\$26.00
GK	•	•					\$26.00



E
NAVY



G
KHAKI



F
BLACK



H
HUNTER



J
GREY



K
BURGUNDY

SX9110 Plaid 2-Tab Scooter

Yarn-Dyed Poly Twill



SX9110	B1	C1	F1	G1	H1	J1	MSRP
UA (4-6X)	S	S	S	S	S	S	\$28.00
XA (7-14)	S	S	S	S	S	S	\$28.00
XD (16-20)	S	S	S	S	S	S	\$28.00
XH (PLUS)	S	•	•	•	•	•	\$32.00



B1
BURGUNDY



C1
GREEN



F1
BLUE/RED



G1
BLUE/GOLD



H1
BROWN



J1
NAVY/RED

SX9059 Belted Pleated Scooter

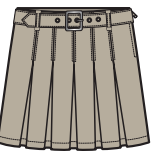
Poly Twill



SX9059	E	G	F	J	MSRP
UA (4-6X)	S	S	•	•	\$26.00
XA (7-14)	S	S	•	•	\$26.00
XD (16-20)	S	S	•	•	\$26.00
XH (PLUS)	•	•	•	•	\$30.00



E
NAVY



G
KHAKI



F
BLACK



J
GREY

SX9129 Pleat Ribbon Scooter

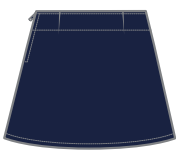
Cotton Blend Twill, 6 Oz.



SX9129	E	G	MSRP
MA (2T-4T)	S	S	\$22.00
UA (4-6X)	S	S	\$24.00
XA (7-14)	S	S	\$24.00
XD (16-20)	S	S	\$24.00



E
NAVY



G
KHAKI

SX9227 Polka Dot Belt Scooter

Cotton Blend Twill, 7 oz



SX9227	E	G	MSRP
UA (4-6X)	•	•	\$26.00
XA (7-14)	•	•	\$26.00
XD (16-20)	•	•	\$26.00



E
NAVY



G
KHAKI

GIRLS SCOOTERS





SX9062 Pull-On Kick Pleat Scooter

Poly Interlock

SX9062	E	G	MSRP
MA (2T-4T)	S	S	\$22.00
UA (4-6X)	•	•	\$24.00
UB (M-XL)	•	•	\$24.00
XG (PLUS)	•	•	\$26.00



SX9251 Pleat Button Front Scooter

Cotton Blend Twill, 6 Oz

SX9251	E	G	MSRP
UA (4-6X)	•	•	\$26.00
XA (7-14)	•	•	\$26.00
XD (16-20)	•	•	\$26.00



SX9252 Contrast Waistband Scooter

Cotton Blend Ponte

SX9252	E	G	MSRP
UU (XS-S)	•	•	\$24.00
UB (M-XL)	•	•	\$24.00



SX9255 Front Button Pleated Scooter

Poly Twill

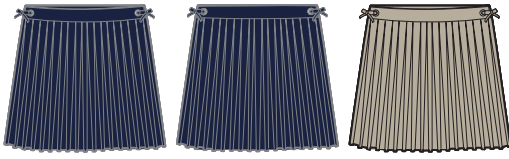
SX9255	E	G	MSRP
UA (4-6X)	•	•	\$24.00
XA (7-14)	•	•	\$24.00
XD (16-20)	•	•	\$24.00
XG (PLUS)	•	•	\$26.00



SX9258 Bow Grommet Scooter

Poly Twill

SX9258	E	G	MSRP
UA (4-6X)	•	•	\$26.00
XA (7-14)	•	•	\$26.00



E
NAVY

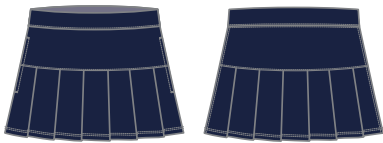
G
KHAKI

SX9261 Performance Pleated Scooter

Poly Piqué

SX9261	E	MSRP
UU (XS-S)	•	\$26.00
UB (M-XL)	•	\$26.00

STRETCH



E
NAVY

SX9263 Fashion Bow Scooter

Poly Twill

SX9263	E	G	MSRP
UA (4-6X)	•	•	\$26.00
XA (7-14)	•	•	\$26.00
XD (16-20)	•	•	\$26.00

ADJUSTABLE WAIST



E
NAVY

G
KHAKI

NEW ITEM

SX9264 Front Bow Scooter

Cotton Blend Twill, 6 oz

SX9264	E	G	MSRP
UA (4-6X)	•	•	\$26.00
XA (7-14)	•	•	\$26.00
XD (16-20)	•	•	\$26.00



E
NAVY

G
KHAKI

NEW ITEM



NEW ITEM

SV9000 Pleated Skirt

Poly Twill

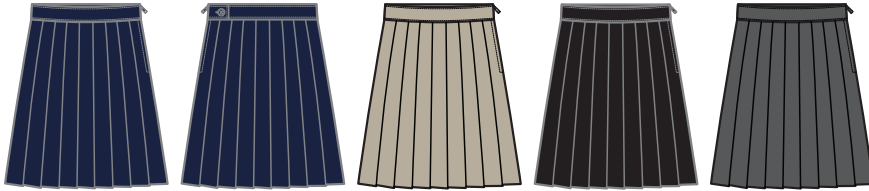


SV9000	E	G	F	J	MSRP
UA (4-6X)	S	S	•	•	\$24.00
XA (7-14)	S	S	•	•	\$24.00
XD (16-20)	S	•	•	•	\$24.00
XH (PLUS)	•	•	•	•	\$28.00

available in Womens p.39

LENGTH
19 1/2

at the knee



E NAVY

G KHAKI

F BLACK

J GREY

SV9002 Plaid Pleated Skirt

Yarn-Dyed Poly



SV9002	B1	C1	F1	G1	H1	J1	MSRP
UA (4-6X)	S	S	S	S	S	S	\$28.00
XA (7-14)	S	S	S	S	S	S	\$28.00
XD (16-20)	S	S	S	S	S	S	\$28.00
XH (PLUS)	S	•	•	•			\$32.00

LENGTH
19 1/2

at the knee



B1 BURGUNDY

C1 GREEN

F1 BLUE/RED

G1 BLUE/GOLD

H1 BROWN

J1 NAVY/RED

SV9011 Front Pleated Tab Skirt

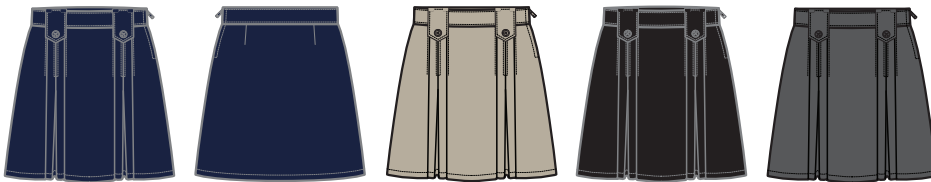
Poly Twill



SV9011	E	G	F	J	MSRP
UA (4-6X)	S	S	S	•	\$24.00
XA (7-14)	S	S	S	•	\$24.00
XD (16-20)	S	S	S	•	\$24.00
XH (PLUS)	•	•	•	•	\$28.00

LENGTH
16 1/2

above the knee



E NAVY

G KHAKI

F BLACK

J GREY

SV9217 Pleated Flare Skirt with Elastic Back

Poly Twill

SV9217	E	G	MSRP
UA (4-6X)	•	•	\$26.00
XA (7-14)	•	•	\$26.00
XD (16-20)	•	•	\$26.00

LENGTH
22

below the knee



E NAVY

G KHAKI



SY9000 V-Neck Pleated Jumper

Poly Twill



SY9000	E	G	F	H	J	K	MSRP
MA (2T-4T)	S	S			•		\$22.00
UA (4-6X)	S	S	•	•	S	•	\$24.00
XA (7-14)	S	S	•	•	S	•	\$24.00
XD (16-20)	S	S	•	•	S	•	\$24.00
XH (PLUS)	•	•	•	•	•	•	\$28.00



E NAVY G KHAKI F BLACK J GREY H HUNTER K BURGUNDY

SY9002 Plaid V-Neck Pleated Jumper

Yarn-Dyed Poly



SY9002	B1	C1	F1	G1	H1	J1	MSRP
UA (4-6X)	S	S	S	S	S	S	\$34.00
XA (7-14)	S	S	S	S	S	S	\$34.00
XD (16-20)	S			S			\$34.00
XH (PLUS)	•	•	•	•	•	•	\$38.00



B1 BURGUNDY C1 GREEN F1 BLUE/RED G1 BLUE/GOLD H1 BROWN J1 NAVY/RED

SY9098 Pleated Ribbon Bow Jumper

Cotton Blend Twill, 6 Oz.



SY9098	E	G	F	MSRP
MA (2T-4T)	S	S		\$22.00
UA (4-6X)	S	S	•	\$24.00
XA (7-14)	S	S	•	\$24.00
XD (16-20)	•	•		\$24.00



E NAVY G KHAKI F BLACK

SY9075 Double Buckle Jumper

Poly Twill



SY9075	E	G	MSRP
UA (4-6X)	S	S	\$26.00
XA (7-14)	S	S	\$26.00
XD (16-20)	•	•	\$26.00
XH (PLUS)	•	•	\$28.00



E NAVY G KHAKI

SY9225 Belted Jumper

Cotton Blend Twill, 6 oz.

SY9225	E	G	MSRP
UA (4-6X)	•	•	\$26.00
XA (7-14)	•	•	\$26.00



E NAVY

G KHAKE

SY9236 Belted Side Pleat Jumper

Polyester Twill

SY9236	E	G	MSRP
UA (4-6X)	•	•	\$26.00
XA (7-14)	•	•	\$26.00



E NAVY

G KHAKE

SY9243 Bow Pocket Jumper

Cotton Blend Ponte

SY9243	E	G	MSRP
UU (XS-S)	•	•	\$26.00
UB (M-XL)	•	•	\$26.00

STRETCH



E NAVY

G KHAKE

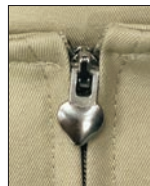
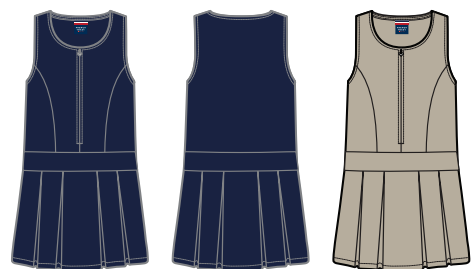


SY9249 Zipper Front Jumper

Poly Twill

SY9249	E	G	MSRP
UA (4-6X)	•	•	\$26.00
XA (7-14)	•	•	\$26.00

NEW ITEM



ZIPPER DETAIL

E NAVY

G KHAKE

SY9250 Bow Front A-Line Jumper

Cotton Blend Twill, 6 oz

SY9250	E	G	MSRP
UA (4-6X)	•	•	\$26.00
XA (7-14)	•	•	\$26.00

NEW ITEM



E NAVY

G KHAKE

SZ9200 Safari Dress

Cotton Blend Twill, 6 oz.

SZ9200	E	G	MSRP
UA (4-6X)	•	•	\$28.00
XA (7-14)	•	•	\$28.00



E
NAVY

G
KHAKI

SZ9018 Ruffle Piqué Polo Dress

Cotton Blend Piqué

SZ9018	E	MSRP
MA (2T-4T)	•	\$22.00
UU (XS-S)	•	\$24.00
UB (M-XL)	•	\$24.00



E
NAVY

SZ9201 Pleat 2-Fer Dress

Cotton Blend Poplin
1X1 Rib (Vest) Polyester (Skirt)

SZ9201	E	MSRP
MA (2T-4T)	•	\$24.00
UA (4-6X)	•	\$28.00
XA (7-14)	•	\$28.00



E
NAVY

SZ9213 Woven Collar Dress

Cotton Blend Ponte

SZ9213	E	MSRP
UU (XS-S)	•	\$26.00
UB (M-XL)	•	\$26.00

STRETCH



E
NAVY

SZ9224 Fit & Flare Dress

Cotton Blend Twill, 6 oz.

SZ9224	E	G	MSRP
UA (4-6X)	•	•	\$26.00
XA (7-14)	•	•	\$26.00



E
NAVY

G
KHAKI

SZ9230 Hi-Low Polo Dress

Cotton Blend Interlock

SZ9230	E	MSRP
UU (XS-S)	•	\$26.00
UB (M-XL)	•	\$26.00



E
NAVY



SZ9231 Sport Polo Dress

Polyester Interlock

SZ9231	E	MSRP
UU (XS-S)	•	\$26.00
UB (M-XL)	•	\$26.00



E
NAVY



LA9479 S/S Crewneck Tee

Poly Blend Jersey



LA9479	W03	N09	K04	H08	R04	MSRP
MA (2T-4T)	*	*	*	*	*	\$7.00
UA (4-6X)	*	*	*	*	*	\$8.00
UB (M-XL)	*	*	*	*	*	\$8.00



LA9502 S/S V-Neck Tee

Poly Blend Jersey



LA9502	W03	N09	K04	H08	R04	MSRP
MA (2T-4T)	*	*	*	*	*	\$7.00
UA (4-6X)	*	*	*	*	*	\$8.00
UB (M-XL)	*	*	*	*	*	\$8.00



SH9238 Kick Short

Cotton Blend Jersey

STRETCH

SH9238	E	G	MSRP
MA (2T-4T)	*	*	\$8.00
UA (4-6X)	*	*	\$10.00
UB (M-XL)	*	*	\$10.00



SK9542 / SK9448 Knit Legging

Cotton Blend Jersey



SK9542	E	G	MSRP
MA (2T-4T)	*	*	\$14.00
UA (4-6X)	*	*	\$16.00
XA (7-14)	*	*	\$16.00
XXL	*	*	\$16.00



SK9501 Fleece Sweatpant

Cotton Blend Fleece

SK9501	E	J	F	MSRP
MA (2T-4T)	S	*	*	\$16.00
UA (4-6X)	S	*	*	\$18.00
UB (M-XL)	S	*	*	\$18.00



SK9500 Fleece Jogger

Cotton Blend Fleece

SK9500	E	J	F	MSRP
MA (2T-4T)	S	*	*	\$16.00
UA (4-6X)	S	*	*	\$18.00
UB (M-XL)	S	*	*	\$18.00



SP9130 Fleece Hoodie

Cotton Blend Fleece

SP9130	E	F	J	MSRP
MA (2T-4T)	S	•	•	\$22.00
UA (4-6X)	S	•	•	\$24.00
UB (M-XL)	S	•	•	\$24.00



E
NAVY



F
BLACK



J
HEATHER
GREY

GIRLS JACKETS & OUTERWEAR

SP9112 Twill Pleated Blazer

Cotton Blend Twill, 7 oz.

SP9112	E	MSRP
UA (4-6X)	•	\$36.00
XA (7-14)	•	\$36.00
XD (16-20)	•	\$36.00



E
NAVY



SP9143 Classic School Blazer

Poly Hopsack

SP9143	E	MSRP
UA (4-6X)	•	\$64.00
XA (7-14)	•	\$64.00
XD (16-20)	•	\$64.00

available in
Womens
p.39



E
NAVY



SP9139 Hidden Hood Jacket

Poly Pongee

(front and back outer body/hood)

Cotton Blend Fleece

(sleeves/front and back body lining)

SP9139	E	MSRP
UU (XS-S)	•	\$36.00
UB (M-XL)	•	\$36.00



E
NAVY



SA9403W S/S Stretch Piqué Polo

Cotton/Elastane Piqué

Available only in 6 piece packs by size.
Available in all colors.



SA9403W	MSRP
XSC (XS)	\$20.00
SC (S)	\$20.00
MC (M)	\$20.00
LCC (L)	\$20.00
XLC (XL)	\$20.00



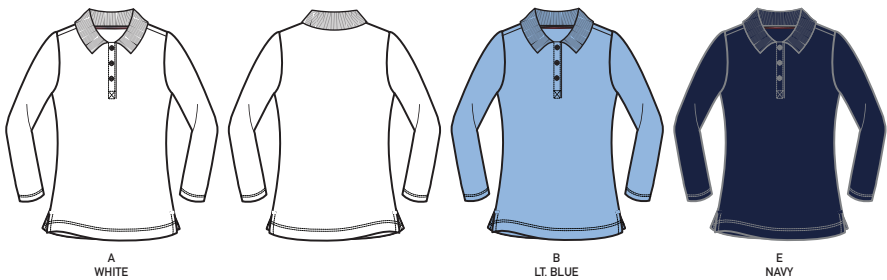
SA9430W L/S Stretch Piqué Polo

Cotton/Elastane Piqué

Available only in 6 piece packs by size.
Available in all colors.



SA9430W	MSRP
XSC (XS)	\$24.00
SC (S)	\$24.00
MC (M)	\$24.00
LCC (L)	\$24.00
XLC (XL)	\$24.00



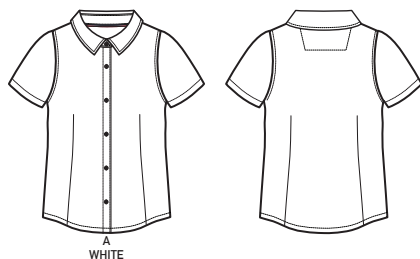
SE9393W S/S Stretch Shirt

Stretch Cotton Poplin

Available only in 6 piece packs by size.



SE9393W	MSRP
XSC (XS)	\$22.00
SC (S)	\$22.00
MC (M)	\$22.00
LCC (L)	\$22.00
XLC (XL)	\$22.00



SE9284W S/S Oxford Shirt

Cotton Blend Oxford

Available only in 6 piece packs by size.
Available in all colors.



SE9284W	MSRP
XSC (XS)	\$24.00
SC (S)	\$24.00
MC (M)	\$24.00
LCC (L)	\$24.00
XLC (XL)	\$24.00



SK9490W Twill Straight Leg Pant

Cotton Elastane Twill, 7 oz.

Available only in 6 piece packs by size.
Available in all colors.



SK9490W	MSRP
2C (2)	\$34.00
4C (4)	\$34.00
6C (6)	\$34.00
8C (8)	\$34.00
10C (10)	\$34.00
12C (12)	\$34.00
14C (14)	\$34.00
16C (16)	\$34.00



SK9405W Stretch Twill Skinny Pant

Cotton Elastane Twill, 7 oz.

Available only in 6 piece packs by size.
Available in all colors.



SK9405W	MSRP
2C (2)	\$34.00
4C (4)	\$34.00
6C (6)	\$34.00
8C (8)	\$34.00
10C (10)	\$34.00
12C (12)	\$34.00
14C (14)	\$34.00
16C (16)	\$34.00

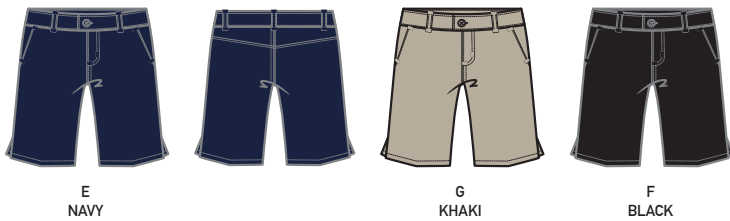


SH9061W Bermuda Short

Cotton/Elastane Twill, 7 oz.



SH9061W	MSRP
2C (2)	\$28.00
4C (4)	\$28.00
6C (6)	\$28.00
8C (8)	\$28.00
10C (10)	\$28.00
12C (12)	\$28.00
14C (14)	\$28.00
16C (16)	\$28.00



SV9000W Pleated Skirt

Poly Twill



SV9000W	MSRP
2C (2)	\$28.00
4C (4)	\$28.00
6C (6)	\$28.00
8C (8)	\$28.00
10C (10)	\$28.00
12C (12)	\$28.00
14C (14)	\$28.00
16C (16)	\$28.00

LENGTH
24 1/2
at the knee



SP9143W Classic School Blazer

Poly Hopsack

Available only in 6 piece packs by size.

SP9143W	MSRP
2C (2)	\$72.00
4C (4)	\$72.00
6C (6)	\$72.00
8C (8)	\$72.00
10C (10)	\$72.00
12C (12)	\$72.00
14C (14)	\$72.00
16C (16)	\$72.00



FRENCH
TOAST.

UNIFORM 2019



SA9084 S/S Piqué Polo

Cotton Blend Piqué



SA9084	A	B	C	D	E	F	H	J	K	L	N	P	S	T	V	Z	MSRP
BA (2T-4T)	S	S	S		S	•	S	•	S	•	S	•	•				\$16.00
CC (XS-S)	S	S	S	•	S	S	S	S	S	S	S	S	S	•	•	•	\$18.00
CB (M-XL)	S	S	S	•	S	S	S	S	S	S	S	S	S	•	•	•	\$18.00
XXL	S	S	S	S	S	S	S	S	S	S	S	S	S	S	S	S	\$18.00
JB (HUSKY)	S	S	S		S	•	•	•	S	•	S	•	•	•			\$20.00

available in
Mens
p.54



SA9509 S/S Sport Polo

Poly Interlock with Wicking



STRETCH



SA9509	A	B	C	E	F	H	K	L	N	P	S	MSRP
CC (XS-S)	S	•	•	S	•	•	•	•	•	•	•	\$20.00
CB (M-XL)	S	•	•	S	•	•	•	•	•	•	•	\$20.00
XXL	S	S	S	S	S	S	S	S	S	S	S	\$20.00

available in
Mens
p.54

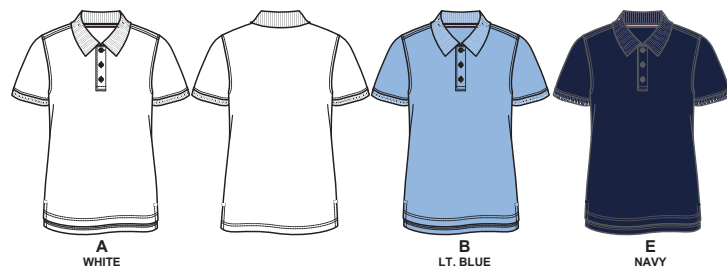


SA9086 S/S Interlock Polo

Cotton Blend Interlock



SA9086	A	B	E	MSRP
CC (XS-S)	S	S	•	\$18.00
CB (M-XL)	S	S	•	\$18.00
XXL	S	S		\$18.00
JB (HUSKY)	S	•	•	\$20.00

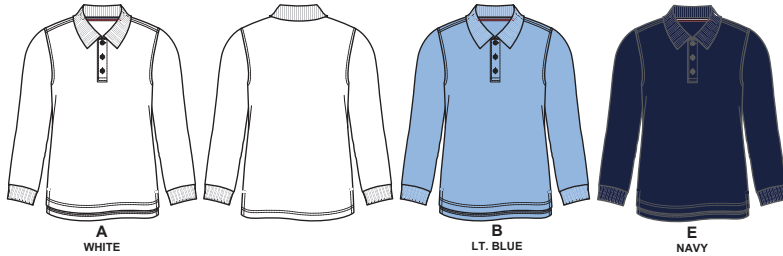


SA9087 L/S Interlock Polo

Cotton Blend Interlock



SA9087	A	B	E	MSRP
CC (XS-S)	S	S	*	\$20.00
CB (M-XL)	S	S	*	\$20.00
XXL	S	S		\$20.00
JB (HUSKY)	*	*	*	\$22.00



A
WHITE

B
LT. BLUE

E
NAVY

SA9085 L/S Piqué Polo

Cotton Blend Piqué



SA9085	A	B	C	E	F	H	J	K	L	N	P	MSRP
BA (2T-4T)	S	S	S	S			S	S	S			\$18.00
CC (XS-S)	S	S	S	S	*	S	S	S	S	S	*	\$20.00
CB (M-XL)	S	S	S	S	*	S	S	S	S	S	*	\$20.00
XXL	S	S	S	S	S	S	S	S	S	S	S	\$20.00
JB (HUSKY)	S	S	*	*	*	*	*	*	*	*	*	\$22.00



A
WHITE

B
LT. BLUE

C
YELLOW

E
NAVY

F
BLACK

H
HUNTER

J
HEATHER GREY

K
BURGUNDY

L
GOLD

N
RED

P
ROYAL

SE9005 S/S Classic Dress Shirt

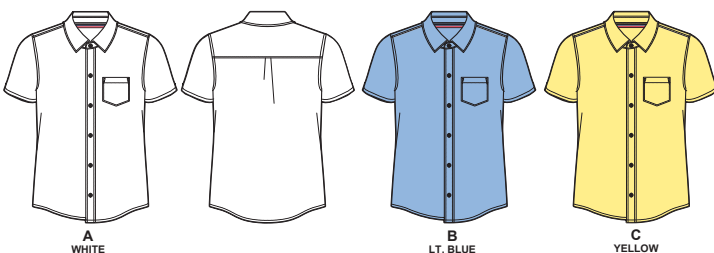
Cotton Blend Poplin



SE9005	A	B	C	MSRP
BA (2T-4T)	S	S	S	\$16.00
CA (4-7)	S	S	S	\$18.00
HB (8-14)	S	S	S	\$18.00
HJ (16-20)	S	S	S	\$18.00
HK (HUSKY)	S	S	S	\$20.00
JN (L-XXL)	*			\$20.00

available in
Mens
p.55

BOYS WOVEN TOPS



A
WHITE

B
LT. BLUE

C
YELLOW

BOYS WOVEN TOPS

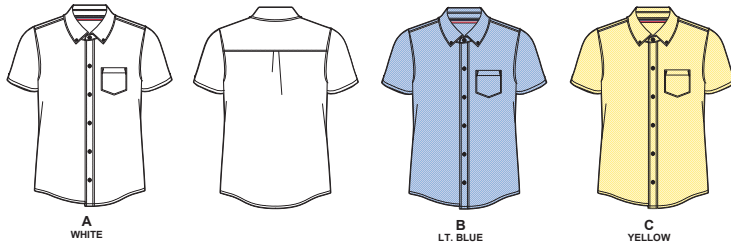
SE9003 S/S Oxford Shirt

Cotton Blend Oxford



SE9003	A	B	C	MSRP
BA (2T-4T)	S	S		\$18.00
CA (4-7)	S	S	*	\$20.00
HB (8-14)	S	S	*	\$20.00
HJ (16-20)	S	S	*	\$20.00
HK (HUSKY)	S	*		\$22.00

available in
Mens
p.55



NEW
ITEM

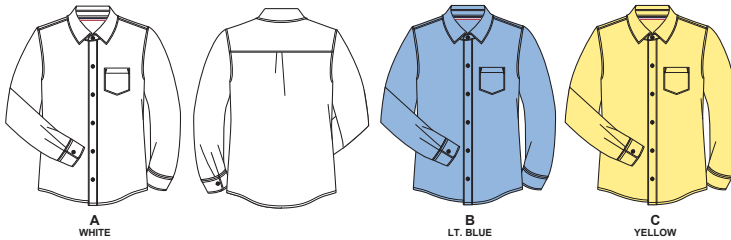
SE9004 L/S Classic Dress Shirt

Cotton Blend Poplin



SE9004	A	B	C	MSRP
BA (2T-4T)	S	S	S	\$18.00
CA (4-7)	S	S	S	\$20.00
HB (8-14)	S	S	S	\$20.00
HJ (16-20)	S	S	S	\$20.00
HK (HUSKY)	S	S		\$22.00

available in
Mens
p.55



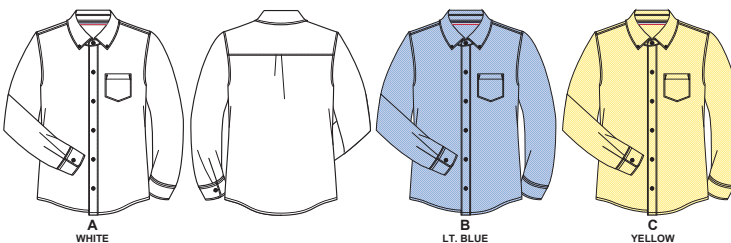
SE9002 L/S Oxford Shirt

Cotton Blend Oxford



SE9002	A	B	C	MSRP
BA (2T-4T)	*			\$20.00
CA (4-7)	S	S	*	\$22.00
HB (8-14)	S	S	*	\$22.00
HJ (16-20)	S	S	*	\$22.00
HK (HUSKY)	S	*		\$24.00

available in
Mens
p.55

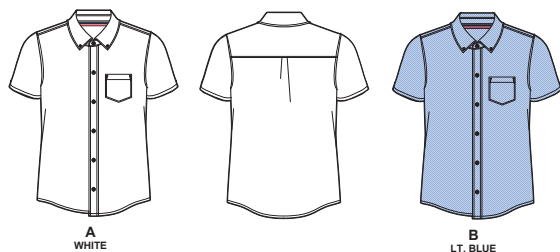


SE9395 S/S Stretch Oxford Shirt

Cotton/Elastane Oxford



SE9395	A	B	MSRP
CA (4-7)	*	*	\$24.00
HB (8-14)	*	*	\$24.00
HJ (16-20)	*	*	\$24.00
HK (HUSKY)	*	*	\$26.00



NEW
ITEM



SC9000 Anti-Pill V-Neck Cardigan
Acrylic

SC9000	E	F	K	N	H	MSRP
BA (2T-4T)	•					\$30.00
CC (XS-S)	S	•	S	•	•	\$32.00
CB (M-XL)	S	•	S	•	•	\$32.00
XXL	S		S			\$32.00
JB (HUSKY)	•					\$34.00

available in Mens
p.56



SC9016 V-Neck Sweater Vest
Acrylic

SC9016	E	F	K	MSRP
BA (2T-4T)	•			\$22.00
CC (XS-S)	S	•	S	\$24.00
CB (M-XL)	S	•	S	\$24.00
XXL	S		S	\$24.00
JB (HUSKY)	•			\$26.00



SC9012 V-Neck Tipped Vest
Cotton/Poly Blend

SC9012	E	MSRP
CC (XS-S)	•	\$24.00
CB (M-XL)	•	\$24.00
JB (HUSKY)	•	\$26.00



SC9033 Zip Front Sweater
Acrylic

SC9033	E	MSRP
CC (XS-S)	•	\$32.00
CB (M-XL)	•	\$32.00



SH9200 Flat Front Short

Cotton Blend Twill, 7 oz



SH9200	E	G	F	J	H	MSRP
CA (4-7)	S	S	S	*	*	\$22.00
HB (8-14)	S	S	S	*	*	\$22.00
HJ (16-20)	S	S	S	*	*	\$22.00
HK (HUSKY)	S	S	*	*	*	\$24.00

INSEAM
9"



E
NAVY

G
KHAKI

F
BLACK

J
GREY



H
GREEN

SH9249 Flat Front Short

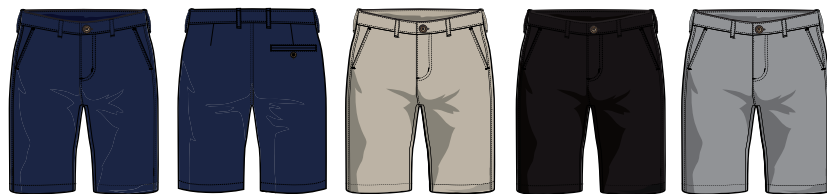
Cotton Elastane Stretch Twill, 7.9 oz



SH9249	E	G	F	J	MSRP
CA (4-7)	*	*	*	*	\$22.00
HB (8-14)	*	*	*	*	\$22.00
HJ (16-20)	*	*	*	*	\$22.00

available in
Mens
p.50

INSEAM
9"



E
NAVY

G
KHAKI

F
BLACK

J
GREY

SH9202 Pleated Short

Cotton Blend Twill, 7 oz



SH9202	E	G	MSRP
CA (4-7)	S	S	\$22.00
HB (8-14)	S	S	\$22.00
HJ (16-20)	S	S	\$22.00

INSEAM
9"



E
NAVY

G
KHAKI



SH9113 Pull-On Short

Cotton Blend Twill, 6 oz



SH9113	E	G	F	J	MSRP
BA (2T-4T)	S	S	.	.	\$18.00
CA (4-7)	\$20.00
HB (8-14)	\$20.00
HJ (16-20)	\$20.00
HK (HUSKY)	\$22.00

INSEAM
9"



E NAVY

G KHAKI

F BLACK

J GREY

SH9244 Pull-On Short

Cotton Blend Twill, 6 oz



SH9244	E	G	MSRP
BA (2T-4T)	.	.	\$18.00
CA (4-7)	.	.	\$20.00
HB (8-14)	.	.	\$20.00
HJ (16-20)	.	.	\$20.00

INSEAM
9 1/2"



E NAVY

G KHAKI

SH9264 Utility Short

Cotton Poplin, 4.3 oz

SH9264	E	G	MSRP
BA (2T-4T)	.	.	\$20.00
CA (4-7)	.	.	\$22.00
HB (8-14)	.	.	\$22.00

INSEAM
9 1/2"



E NAVY

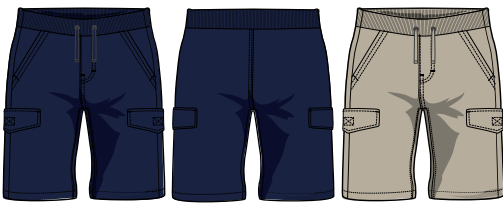
G KHAKI

SH9265 Pull-On Cargo Short

Cotton Blend Twill, 6 oz

SH9265	E	G	MSRP
CA (4-7)	.	.	\$22.00
HB (8-14)	.	.	\$22.00

INSEAM
9 1/2"



E NAVY

G KHAKI



SH9262 Knit WB Elastic Short

Poly Microfiber with Wicking, 160 GSM

SH9262	E	G	MSRP
CA (4-7)	.	.	\$22.00
HB (8-14)	.	.	\$22.00

INSEAM
9 1/2"

STRETCH



E NAVY

G KHAKI



SH9252 Flat Front Stretch Performance Short

Poly Microfiber with Wicking, 160 GSM

SH9252	E	G	MSRP
CA (4-7)	.	.	\$24.00
HB (8-14)	.	.	\$24.00
HJ (16-20)	.	.	\$24.00
HK (HUSKY)	.	.	\$26.00

INSEAM
9"

STRETCH



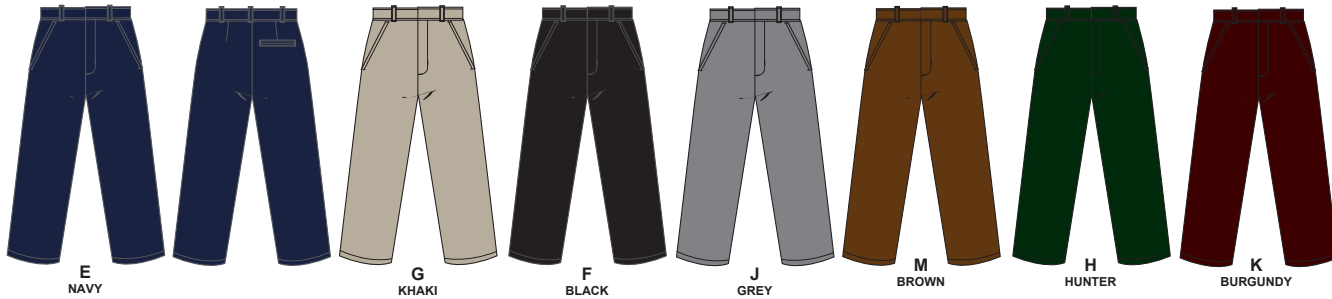
E NAVY

G KHAKI

SK9001 Relaxed Fit Work Wear Finish Pant

Cotton Blend Twill, 8 oz

SK9001	E	G	F	J	M	H	K	MSRP
CA (4-7)	S	S	S	S	*	S	S	\$28.00
HB (8-14)	S	S	S	S	*	S	S	\$28.00
HJ (16-20)	S	S	S	S	*	S	S	\$28.00
CB (4S-7S)	S	S		*				\$28.00
HC (8S-14S)	S	S		*				\$28.00
HK (HUSKY)	S	S	S	S		*	*	\$32.00



NEW ITEM

SK9280 Relaxed Fit Twill Pant

Cotton Blend Twill, 8 oz



SK9280	E	G	F	J	MSRP
CA (4-7)	S	S	S	S	\$28.00
HB (8-14)	S	S	S	S	\$28.00
HJ (16-20)	S	S	S	S	\$28.00
CB (4S-7S)	S	S			\$28.00
HC (8S-14S)	S	S			\$28.00
HK (HUSKY)	S	*	*	*	\$32.00



SK9103 Relaxed Fit Pleated Pant

Cotton Blend Twill, 8 oz



SK9103	E	G	F	J	MSRP
CA (4-7)	S	S	*	*	\$28.00
HB (8-14)	S	S	*	*	\$28.00
HJ (16-20)	S	S	*	*	\$28.00
HK (HUSKY)	S	S			\$32.00



SK9319 Relaxed Fit Pull-On Twill Pant

Cotton Blend Twill, 7 oz



SK9319	E	G	F	J	MSRP
BA (2T-4T)	S	S	S	S	\$22.00
CA (4-7)	S	S	•		\$24.00
HB (8-14)	S	S	•		\$24.00
HJ (16-20)	S	S			\$24.00
HK (HUSKY)	•	•			\$28.00



SK9182 Straight Leg Utility Pant

Cotton Blend Twill, 8 oz



SK9182	E	G	MSRP
BA (2T-4T)	•	•	\$26.00
CA (4-7)	S	S	\$28.00
HB (8-14)	S	S	\$28.00
HJ (16-20)	S	S	\$28.00
HK (HUSKY)	S	S	\$32.00



SK9272 Straight Leg All Season Pant

Poly Rayon Flannel



SK9272	E	R	MSRP
CA (4-7)	S	S	\$28.00
HB (8-14)	S	S	\$28.00
HJ (16-20)	S	S	\$28.00
HK (HUSKY)	•	•	\$32.00



SK9518 Straight Fit Chino Pant

Cotton/Elastane Stretch Twill, 7.9 oz



SK9518	E	G	F	J	MSRP
CA (4-7)	S	S	•	•	\$28.00
HB (8-14)	S	S	•	•	\$28.00
HJ (16-20)	S	S	•	•	\$28.00
HK (HUSKY)	•	•	•	•	\$32.00

available in Mens p.56



BOYS PANTS



NEW
ITEM

SK9510 Pull-On Jogger

Cotton Blend Twill, 6 oz



SK9510	E	G	F	J	MSRP
BA (2T-4T)	•	•			\$22.00
CA (4-7)	•	•	•	•	\$24.00
HB (8-14)	•	•	•	•	\$24.00
HJ (16-20)	•	•	•	•	\$24.00
HK (HUSKY)	•	•			\$28.00



SK9531 Slim Fit Stretch 5-Pocket Pant

Cotton/Elastane Stretch Twill, 7.9 oz



SK9531	E	G	MSRP
CA (4-7)	•	•	\$28.00
HB (8-14)	•	•	\$28.00
HJ (16-20)	•	•	\$28.00
HK (HUSKY)	•	•	\$32.00



SK9545 Utility Jogger

Cotton Poplin, 4.3 oz



SK9545	E	G	MSRP
BA (2T-4T)	•	•	\$26.00
CA (4-7)	•	•	\$28.00
HB (8-14)	•	•	\$28.00
HJ (16-20)	•	•	\$28.00



SK9546 Straight Fit Comfort WB Pant

Cotton/Elastane Stretch Twill, 7.9 oz



SK9546	E	G	MSRP
CA (4-7)	•	•	\$30.00
HB (8-14)	•	•	\$30.00
HJ (16-20)	•	•	\$30.00
HK (HUSKY)	•	•	\$32.00



SK9549 Comfort WB Jogger

Cotton/Elastane Stretch Twill, 7.9 oz



SK9549	E	G	MSRP
CA (4-7)	•	•	\$30.00
HB (8-14)	•	•	\$30.00
HJ (16-20)	•	•	\$30.00
HK (HUSKY)	•	•	\$32.00



LA9497 S/S Crewneck Tee

Cotton Jersey

LA9497	W03	N09	K04	RO4	HO8	MSRP
BA (2T-4T)	*	*	*	*	*	\$7.00
CA (4-7)	*	*	*	*	*	\$8.00
CB (8-16)	*	*	*	*	*	\$8.00



LA9498 S/S V-Neck Tee

Cotton Jersey

LA9498	W03	N09	K04	RO4	HO8	MSRP
BA (2T-4T)	*	*	*	*	*	\$7.00
CA (4-7)	*	*	*	*	*	\$8.00
CB (8-16)	*	*	*	*	*	\$8.00



SP9123 Zip Fleece Hoodie

Cotton Blend Fleece

SP9123	E	F	J	MSRP
BA (2T-4T)	S	*	*	\$24.00
CA (4-7)	S	*	*	\$26.00
CB (8-16)	S	*	*	\$26.00
XXL	S	*	*	\$26.00



SK9002 Fleece Jogger

Cotton Blend Fleece

SK9002	E	F	J	MSRP
BA (2T-4T)	*	*	*	\$18.00
CA (4-7)	*	*	*	\$20.00
CB (8-16)	*	*	*	\$20.00



SK9003 Fleece Sweatpant

Cotton Blend Fleece

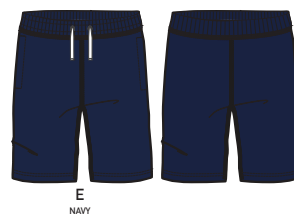
SK9003	E	MSRP
BA (2T-4T)	*	\$18.00
CA (4-7)	*	\$20.00
CB (8-16)	*	\$20.00
XXL	*	\$20.00



SH9245 Fleece Gym Short

Cotton Blend Fleece

SH9245	E	MSRP
CA (4-7)	S	\$16.00
CB (8-16)	S	\$16.00





SH9263 Closed Hole Mesh Short

Poly Mesh

SH9263	E	MSRP
BA (2T-4T)	S	\$10.00
CA (4-7)	S	\$12.00
CB (8-16)	S	\$12.00

available in Mens p.56



E NAVY

NEW ITEM

SA9562 Fleece Hoodie

Cotton Blend Fleece

SA9562	E	MSRP
BA (2T-4T)	S	\$24.00
CA (4-7)	S	\$26.00
CB (8-16)	S	\$26.00

available in Mens p.58



E NAVY

NEW ITEM

SA9561 1/4 Zip Fleece

Cotton Blend Fleece

SA9561	E	MSRP
BA (2T-4T)	S	\$22.00
CA (4-7)	S	\$24.00
CB (8-16)	S	\$24.00
XXL	S	\$24.00

available in Mens p.58



E NAVY

NEW ITEM

SA9563 1/4 Zip Mesh Pullover

Poly Mesh

SA9563	E	MSRP
CA (4-7)	S	\$20.00
CB (8-16)	S	\$20.00
XXL	S	\$20.00



E NAVY

NEW ITEM

SP9144 Classic School Blazer

Poly Hopsack

SP9144	E	MSRP
CA (4-7)	•	\$64.00
HB (8-14)	•	\$64.00
HJ (16-20)	•	\$64.00
HK (HUSKY)	•	\$70.00

available in
Mens
p.58



E
NAVY

SP9064 Transitional Jacket

Poly Ripstop

SP9064	E	MSRP
CC (XS-S)	S	\$36.00
CB (M-XL)	S	\$36.00
XXL	S	\$36.00



E
NAVY

SP9147 Full Zip Micro Fleece Jacket

Poly Micro Fleece

SP9147	E	MSRP
CC (XS-S)	•	\$32.00
CB (M-XL)	•	\$32.00

available in
Mens
p.58



E
NAVY



SA9084Y S/S Piqué Polo

Cotton Blend Piqué

Available only in 6 piece packs by size.
Available in all colors.

SA9084Y	MSRP
SC (S)	\$18.00
MC (M)	\$18.00
LCC (L)	\$18.00
XLC (XL)	\$18.00
2XC (2XL)	\$18.00



SA9509Y S/S Sport Polo

Polyester Interlock with Wicking

Available only in 6 piece packs by size.
Available in all colors.

SA9509Y	MSRP
SC (S)	\$20.00
MC (M)	\$20.00
LCC (L)	\$20.00
XLC (XL)	\$20.00
2XC (2XL)	\$20.00



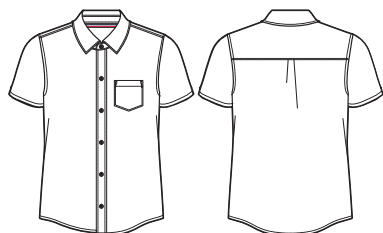
SE9005Y S/S Classic Shirt

Cotton Blend Poplin

Available only in 6 piece packs by size.
Available in all colors.



SE9005Y	MSRP
SC (S)	\$20.00
MC (M)	\$20.00
LCC (L)	\$20.00
XLC (XL)	\$20.00
2XC (2XL)	\$20.00



A
WHITE

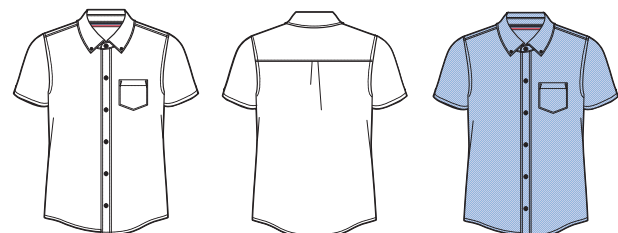
SE9003Y S/S Oxford Shirt

Cotton Blend Oxford

Available only in 6 piece packs by size.
Available in all colors.



SE9003Y	MSRP
SC (S)	\$22.00
MC (M)	\$22.00
LCC (L)	\$22.00
XLC (XL)	\$22.00
2XC (2XL)	\$22.00



A
WHITE

B
LT. BLUE

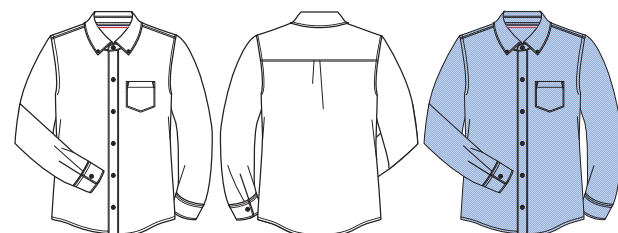
SE9002Y L/S Oxford Shirt

Cotton Blend Oxford

Available only in 6 piece packs by size.
Available in all colors.



SE9002Y	MSRP
SC (S)	\$24.00
MC (M)	\$24.00
LCC (L)	\$24.00
XLC (XL)	\$24.00
2XC (2XL)	\$24.00



A
WHITE

B
LT. BLUE

SC9000Y Anti-Pill V-Neck Cardigan

Acrylic

Available only in 6 piece packs by size.

SC9000Y	MSRP
SC (S)	\$36.00
MC (M)	\$36.00
LCC (L)	\$36.00
XLC (XL)	\$36.00



E
NAVY



SH9249Y Flat Front Short

Cotton Elastane Stretch Twill, 7.9 oz

Available only in 6 piece packs by size. Available in all colors.

STRETCH

SK9249Y	MSRP
W28C (W28)	\$26.00
W30C (W30)	\$26.00
W32C (W32)	\$26.00
W34C (W34)	\$26.00
W36C (W36)	\$26.00
W38C (W38)	\$26.00

SK9518Y Straight Fit Chino Pant

Cotton Elastane Stretch Twill, 7.9 oz

Available only in 6 piece packs by size. Available in all colors.

STRETCH

SK9518Y	INSEAM			MSRP
	30	32	34	
28	2830C	2832C	2834C	\$34.00
30	3030C	3032C	3034C	\$34.00
32	3230C	3232C	3234C	\$34.00
34	3430C	3432C	3434C	\$34.00
36	3630C	3632C	3634C	\$34.00
38	3830C	3832C	3834C	\$34.00



SK9280Y Relaxed Fit Twill Pant

Cotton Blend Twill, 8 oz

Available only in 6 piece packs by size. Available in all colors.



SK9280Y	INSEAM			MSRP
	30	32	34	
28	2830C	2832C	2834C	\$34.00
30	3030C	3032C	3034C	\$34.00
32	3230C	3232C	3234C	\$34.00
34	3430C	3432C	3434C	\$34.00
36	3630C	3632C	3634C	\$34.00
38	3830C	3832C	3834C	\$34.00



SP9144Y Classic School Blazer

Polyester Hopsack

Available only in 6 piece packs by size.

SP9144Y	MSRP
36C (36)	\$72.00
38C (38)	\$72.00
40C (40)	\$72.00
42C (42)	\$72.00



BOYS & GIRLS ACCESSORIES

Adjustable Ties

Ties are perfect accessories to amplify our uniforms. We offer a wide variety of colors that will not go out of style. Also with adjustable band that goes under the collar.

Boys (4-20 sizes)
one size only,
sold in three dozen
prepack.
100% polyester

SF9011/SF9012

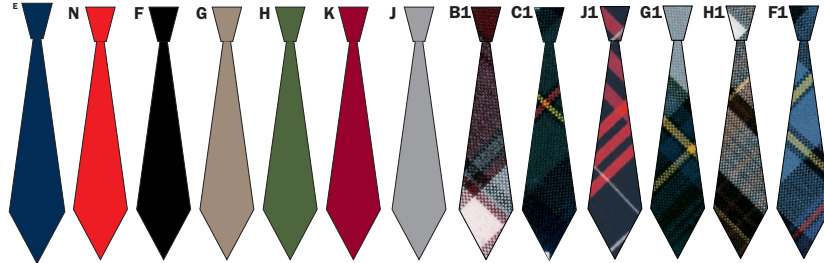
TA 4-7 One size fits all
TC 8-12 One size fits all
TE 14-20 One size fits all

SF9011 (SOLIDS) MSRP: \$8

(N) Red (H) Hunter
(K) Burgundy (F) Black
(E) Navy (G) Khaki
(J) Grey

SF9012 (PLAIDS) MSRP: \$8

(B1) Burgundy (C1) Green
(J1) Navy/Red (G1) Blue/Gold
(H1) Brown (F1) Blue/Red



Adjustable Cross Ties

To top off our uniforms, we offer these simple ties with adjustable buckles and dome pearl embellishment in the front.

One size only, sold in
three dozen prepack.
100% polyester

SF9002/SF9003

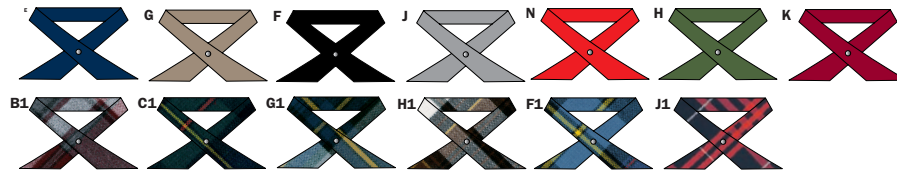
VA 4-20 One size fits all

SF9002 (SOLIDS) MSRP: \$8

(N) Red (H) Hunter
(K) Burgundy (F) Black
(E) Navy (G) Khaki
(J) Grey

SF9003 (PLAIDS) MSRP: \$8

(B1) Burgundy (C1) Green
(J1) Navy/Red (G1) Blue/Gold
(H1) Brown (F1) Blue/Red





FRENCH
TOAST®

Back-to-School 2019
Best-in-Class Performance